

# Mt. SAC Athletics Complex East

Walnut, CA

## Lighting System

Pole / Fixture Summary						
Pole ID	Pole Height	Mtg Height	Fixture Qty	Luminaire Type	Load	Group
F1-F4	100'	100'	18	228NB 1400	25.20 kW	B
		80'	2	96 LED	0.79 kW	D
F5	147'	147'	28	228NB 1400	39.20 kW	A
		107'	4	96 LED	1.58 kW	C
F6-F7	155'	155'	28	228NB 1400	39.20 kW	A
F8	130'	130'	28	228NB 1400	39.20 kW	A
		90'	4	96 LED	1.58 kW	C
<b>8</b>			<b>200</b>		<b>263.90 kW</b>	

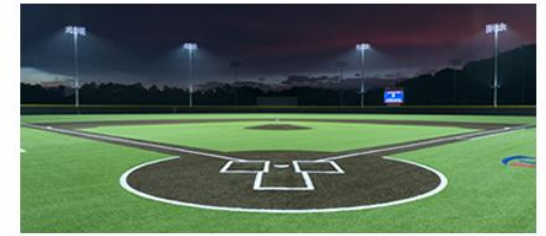
Group Summary			
Group	Description	Load	Fixture Qty
A	Home Side	156.8 kW	112
B	Visitor Side	100.8 kW	72
C	Bleacher-Home	3.15 kW	8
D	Bleacher-Visitor	3.15 kW	8

Fixture Type Summary							
Type	Source	Wattage	Lumens	L90	L80	L70	Quantity
228NB 1400	LED 5700K - 75 CRI	1400W	133,000	>36,000	>36,000	>36,000	184
96 LED	LED 5700K - 75 CRI	394W	38,600	61,000	>72,000	>72,000	16

## Light Level Summary

Calculation Grid Summary							
Grid Name	Calculation Metric	Illumination				Groups	Fixture Qty
		Ave	Min	Max	Max/Min		
Dispersal Area	Horizontal	1.60	0	5	84.31	C,D	16
Football	Camera 1	106	92	132	1.43	A,B	184
Football	Camera 2	108	95	133	1.40	A,B	184
Football	Horizontal Illuminance	123	110	144	1.31	A,B	184
Home Bleacher Area	Horizontal	2.90	2	6	3.40	C	8
Home Bleacher	Horizontal	3.80	0	12	0.00	C	8
Track and Field Area	Camera 1	111	91	142	1.57	A,B	184
Track and Field Area	Camera 2	113	94	155	1.66	A,B	184
Track and Field Area	Horizontal	124	108	146	1.35	A,B	184
Track	Camera 1	102	78	125	1.60	A,B	184
Track	Camera 2	105	79	129	1.63	A,B	184
Track	Horizontal Illuminance	101	92	109	1.18	A,B	184
Visitor Bleacher Area	Horizontal	2.60	1	7	10.87	D	8
Visitor Bleacher	Horizontal	5	1	9	6.04	D	8

## From Hometown to Professional



**We Make It Happen.**

Not to be reproduced in whole or part without the written consent of Musco Sports Lighting, LLC. ©1981, 2016 Musco Sports Lighting, LLC.

**Mt. SAC Athletics Complex East**  
Walnut, CA

EQUIPMENT LIST FOR AREAS SHOWN									
Pole				Luminaires					
QTY	LOCATION	SIZE	GRADE ELEVATION	MOUNTING HEIGHT	LUMINAIRE TYPE	QTY / POLE	THIS GRID	OTHER GRIDS	
2	F1, F4	100'	18'	98'	96 LED	2	0	2	
				118'	228NB 1400	18	18	0	
2	F2-F3	100'	29'	109'	96 LED	2	0	2	
				129'	228NB 1400	18	18	0	
1	F5	147'	-	107'	96 LED	4	0	4	
				147'	228NB 1400	28	28	0	
2	F6-F7	155'	17'	172'	228NB 1400	28	28	0	
1	F8	130'	17'	107'	96 LED	4	0	4	
				147'	228NB 1400	28	28	0	
8	TOTALS					200	184	16	

GRID SUMMARY	
Name:	Football
Size:	360' x 160'
Spacing:	30.0' x 30.0'
Height:	3.0' above grade

ILLUMINATION SUMMARY	
MAINTAINED HORIZONTAL FOOTCANDLES	
	Entire Grid
<b>Guaranteed Average:</b>	<b>100</b>
Scan Average:	122.7
Maximum:	144
Minimum:	110
Avg / Min:	1.12
<b>Guaranteed Max / Min:</b>	<b>1.7</b>
Max / Min:	1.31
UG (adjacent pts):	1.09
CU:	0.31
No. of Points:	72

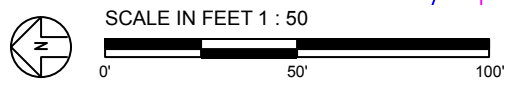
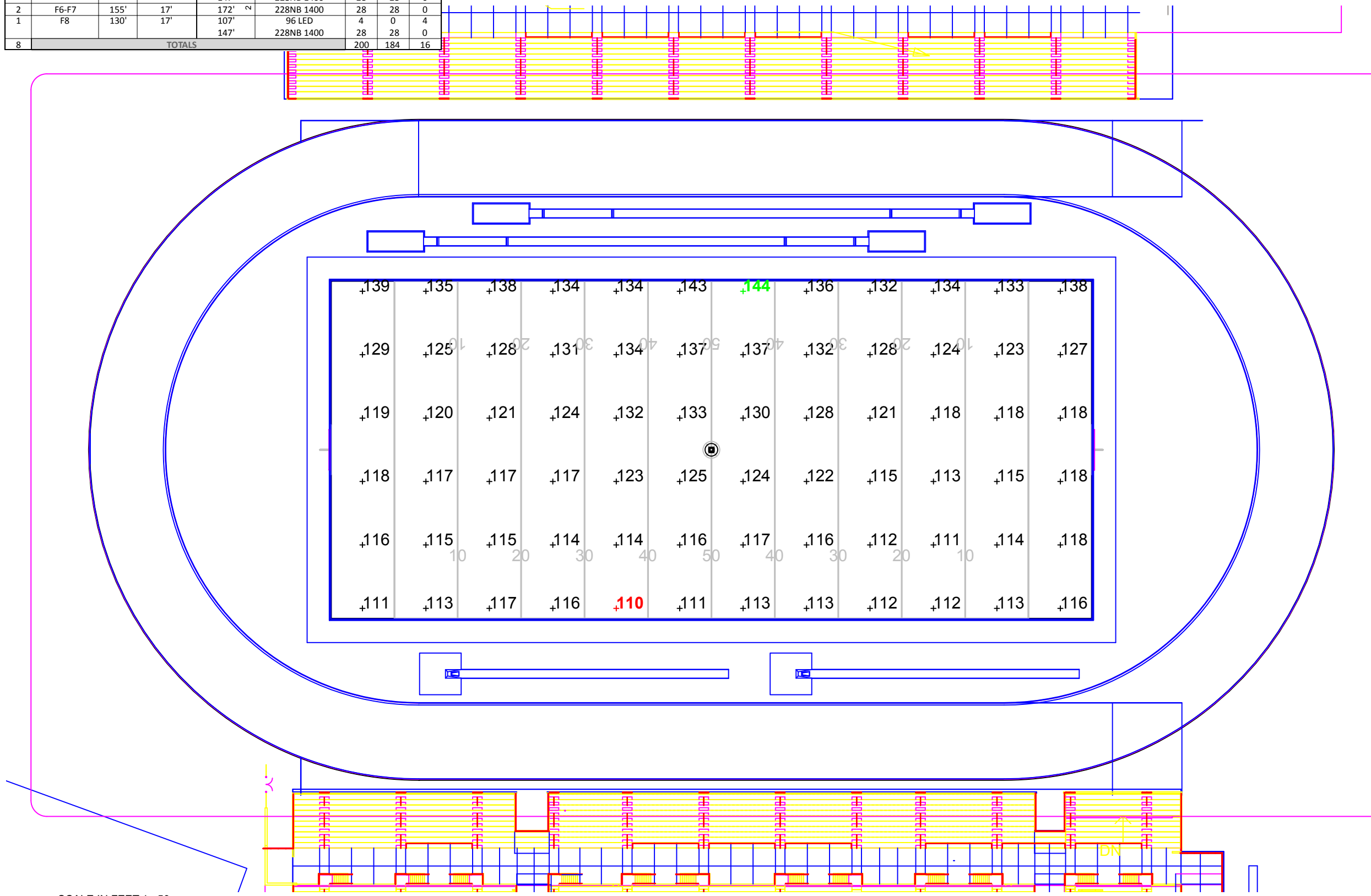
LUMINAIRE INFORMATION			
Color / CRI:	5700K - 75 CRI		
Luminaire Output:	133,000 lumens		
Total LLF:	1.000		
<b>No. of Luminaires:</b>	<b>184</b>		
Total Load:	257.6 kW		
Lumen Maintenance			
Luminaire Type	L90 hrs	L80 hrs	L70 hrs
228NB 1400	>36,000	>36,000	>36,000
Reported per TM-21-11. See cutsheets for details.			

**Guaranteed Performance:** The ILLUMINATION described above is guaranteed per your Musco Warranty document and includes a 0.95 dirt depreciation factor.

**Field Measurements:** Individual field measurements may vary from computer-calculated predictions and should be taken in accordance with IESNA LM-5-04.

**Electrical System Requirements:** Refer to Amperage Draw Chart and/or the "Musco Control System Summary" for electrical sizing.

**Installation Requirements:** Results assume +/- 5% nominal voltage at line side of the driver and structures located within 3 feet (1m) of design locations.



Pole location(s) Ⓢ dimensions are relative to 0,0 reference point(s) ⊗



EQUIPMENT LIST FOR AREAS SHOWN									
Pole				Luminaires					
QTY	LOCATION	SIZE	GRADE ELEVATION	MOUNTING HEIGHT	LUMINAIRE TYPE	QTY / POLE	THIS GRID	OTHER GRIDS	
2	F1, F4	100'	18'	98'	96 LED	2	0	2	
				118'	228NB 1400	18	18	0	
2	F2-F3	100'	29'	109'	96 LED	2	0	2	
				129'	228NB 1400	18	18	0	
1	F5	147'	-	107'	96 LED	4	0	4	
				147'	228NB 1400	28	28	0	
2	F6-F7	155'	17'	172'	228NB 1400	28	28	0	
1	F8	130'	17'	107'	96 LED	4	0	4	
				147'	228NB 1400	28	28	0	
8	TOTALS					200	184	16	

GRID SUMMARY	
Name:	Football
Size:	360' x 160'
Spacing:	30.0' x 30.0'
Height:	3.0' above grade

ILLUMINATION SUMMARY	
MAINTAINED TV FOOTCANDLES: Camera 1	
Entire Grid	
Guaranteed Average:	100
Scan Average:	105.9
Maximum:	132
Minimum:	92
Avg / Min:	1.15
Guaranteed Max / Min:	1.7
Max / Min:	1.43
UG (adjacent pts):	1.13
CU:	0.31
No. of Points:	72

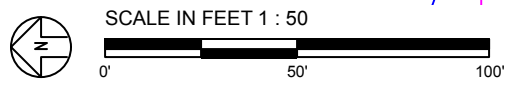
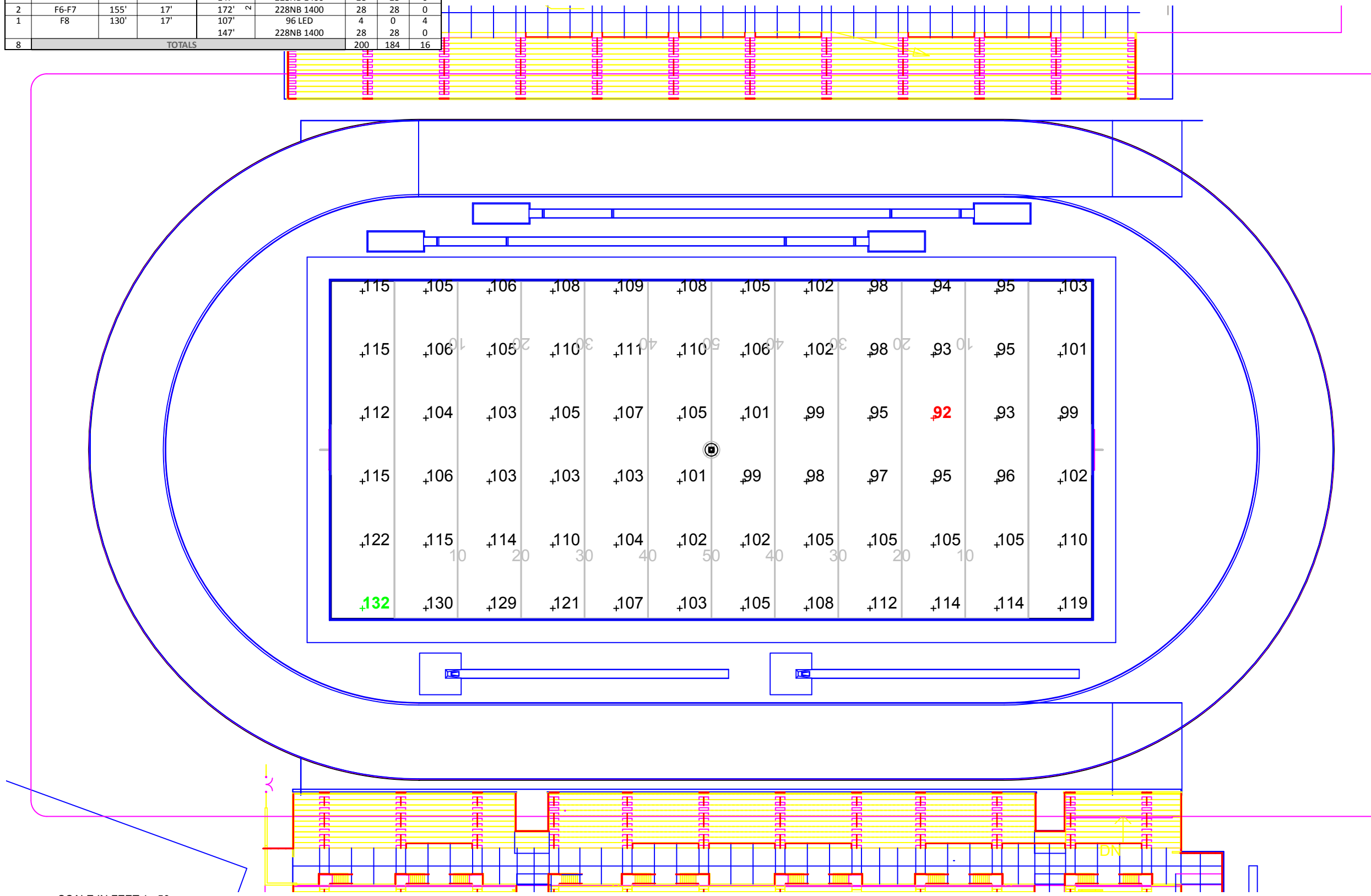
LUMINAIRE INFORMATION			
Color / CRI:	5700K - 75 CRI		
Luminaire Output:	133,000 lumens		
Total LLF:	1.000		
No. of Luminaires:	184		
Total Load:	257.6 kW		
Lumen Maintenance			
Luminaire Type	L90 hrs	L80 hrs	L70 hrs
228NB 1400	>36,000	>36,000	>36,000
Reported per TM-21-11. See cutsheets for details.			

**Guaranteed Performance:** The ILLUMINATION described above is guaranteed per your Musco Warranty document and includes a 0.95 dirt depreciation factor.

**Field Measurements:** Individual field measurements may vary from computer-calculated predictions and should be taken in accordance with IESNA LM-5-04.

**Electrical System Requirements:** Refer to Amperage Draw Chart and/or the "Musco Control System Summary" for electrical sizing.

**Installation Requirements:** Results assume +/- 5% nominal voltage at line side of the driver and structures located within 3 feet (1m) of design locations.



Pole location(s) ⊗ dimensions are relative to 0,0 reference point(s) ⊗



**Mt. SAC Athletics Complex East**  
Walnut, CA

EQUIPMENT LIST FOR AREAS SHOWN									
Pole				Luminaires					
QTY	LOCATION	SIZE	GRADE ELEVATION	MOUNTING HEIGHT	LUMINAIRE TYPE	QTY / POLE	THIS GRID	OTHER GRIDS	
2	F1, F4	100'	18'	98'	96 LED	2	0	2	
				118'	228NB 1400	18	18	0	
2	F2-F3	100'	29'	109'	96 LED	2	0	2	
				129'	228NB 1400	18	18	0	
1	F5	147'	-	107'	96 LED	4	0	4	
				147'	228NB 1400	28	28	0	
2	F6-F7	155'	17'	172'	228NB 1400	28	28	0	
1	F8	130'	17'	107'	96 LED	4	0	4	
				147'	228NB 1400	28	28	0	
8	TOTALS					200	184	16	

GRID SUMMARY	
Name:	Football
Size:	360' x 160'
Spacing:	30.0' x 30.0'
Height:	3.0' above grade

ILLUMINATION SUMMARY	
MAINTAINED TV FOOTCANDLES: Camera 2	
Entire Grid	
<b>Guaranteed Average:</b>	<b>100</b>
Scan Average:	107.6
Maximum:	133
Minimum:	95
Avg / Min:	1.13
<b>Guaranteed Max / Min:</b>	<b>1.7</b>
Max / Min:	1.40
UG (adjacent pts):	1.14
CU:	0.31
No. of Points:	72

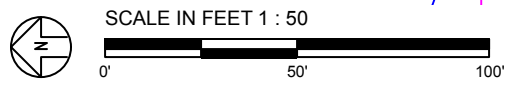
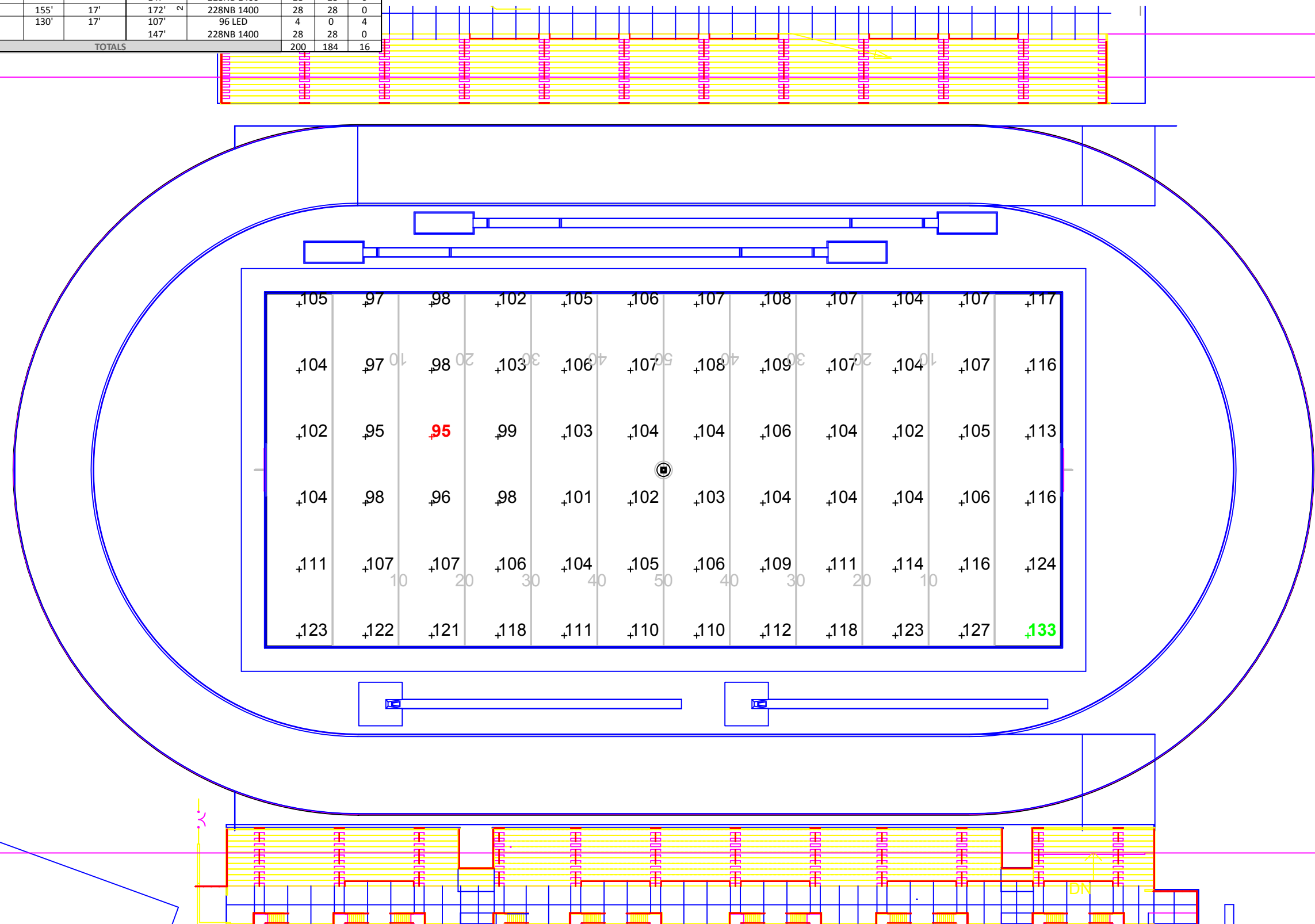
LUMINAIRE INFORMATION			
Color / CRI:	5700K - 75 CRI		
Luminaire Output:	133,000 lumens		
Total LLF:	1.000		
<b>No. of Luminaires:</b>	<b>184</b>		
Total Load:	257.6 kW		
Lumen Maintenance			
Luminaire Type	L90 hrs	L80 hrs	L70 hrs
228NB 1400	>36,000	>36,000	>36,000
Reported per TM-21-11. See cutsheets for details.			

**Guaranteed Performance:** The ILLUMINATION described above is guaranteed per your Musco Warranty document and includes a 0.95 dirt depreciation factor.

**Field Measurements:** Individual field measurements may vary from computer-calculated predictions and should be taken in accordance with IESNA LM-5-04.

**Electrical System Requirements:** Refer to Amperage Draw Chart and/or the "Musco Control System Summary" for electrical sizing.

**Installation Requirements:** Results assume +/- 5% nominal voltage at line side of the driver and structures located within 3 feet (1m) of design locations.



Pole location(s) ⊕ dimensions are relative to 0,0 reference point(s) ⊗



EQUIPMENT LIST FOR AREAS SHOWN									
Pole				Luminaires					
QTY	LOCATION	SIZE	GRADE ELEVATION	MOUNTING HEIGHT	LUMINAIRE TYPE	QTY / POLE	THIS GRID	OTHER GRIDS	
2	F1, F4	100'	18'	98'	96 LED	2	0	2	
				118'	228NB 1400	18	18	0	
2	F2-F3	100'	29'	109'	96 LED	2	0	2	
				129'	228NB 1400	18	18	0	
1	F5	147'	-	107'	96 LED	4	0	4	
2	F6-F7	155'	17'	172'	228NB 1400	28	28	0	
				147'	228NB 1400	28	28	0	
1	F8	130'	17'	107'	96 LED	4	0	4	
				147'	228NB 1400	28	28	0	
8	TOTALS					200	184	16	

GRID SUMMARY	
Name:	Track
Size:	Irregular
Spacing:	30.0' x 30.0'
Height:	3.0' above grade

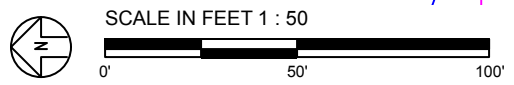
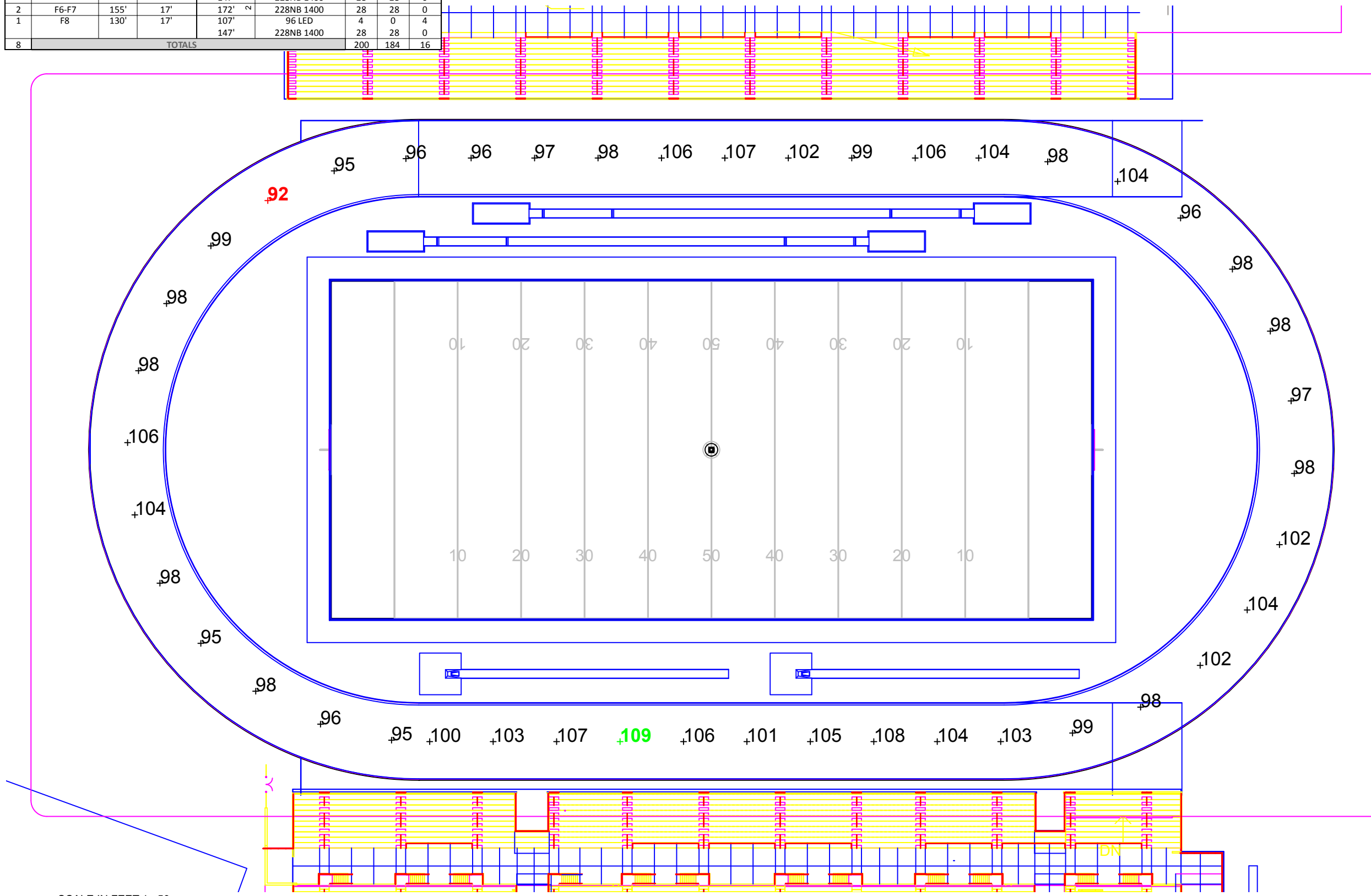
ILLUMINATION SUMMARY			
MAINTAINED HORIZONTAL FOOTCANDLES			
Entire Grid			
Guaranteed Average:	100		
Scan Average:	100.6		
Maximum:	109		
Minimum:	92		
Avg / Min:	1.09		
Guaranteed Max / Min:	1.7		
Max / Min:	1.18		
UG (adjacent pts):	0.00		
CU:	0.16		
No. of Points:	44		
LUMINAIRE INFORMATION			
Color / CRI:	5700K - 75 CRI		
Luminaire Output:	133,000 lumens		
Total LLF:	1.000		
No. of Luminaires:	184		
Total Load:	257.6 kW		
Lumen Maintenance			
Luminaire Type	L90 hrs	L80 hrs	L70 hrs
228NB 1400	>36,000	>36,000	>36,000
Reported per TM-21-11. See cutsheets for details.			

**Guaranteed Performance:** The ILLUMINATION described above is guaranteed per your Musco Warranty document and includes a 0.95 dirt depreciation factor.

**Field Measurements:** Individual field measurements may vary from computer-calculated predictions and should be taken in accordance with IESNA LM-5-04.

**Electrical System Requirements:** Refer to Amperage Draw Chart and/or the "Musco Control System Summary" for electrical sizing.

**Installation Requirements:** Results assume +/- 5% nominal voltage at line side of the driver and structures located within 3 feet (1m) of design locations.



Pole location(s) ⊕ dimensions are relative to 0,0 reference point(s) ⊗



# Mt. SAC Athletics Complex East

Walnut, CA

EQUIPMENT LIST FOR AREAS SHOWN									
Pole				Luminaires					
QTY	LOCATION	SIZE	GRADE ELEVATION	MOUNTING HEIGHT	LUMINAIRE TYPE	QTY / POLE	THIS GRID	OTHER GRIDS	
2	F1, F4	100'	18'	98'	96 LED	2	0	2	
				118'	228NB 1400	18	18	0	
2	F2-F3	100'	29'	109'	96 LED	2	0	2	
				129'	228NB 1400	18	18	0	
1	F5	147'	-	107'	96 LED	4	0	4	
				147'	228NB 1400	28	28	0	
2	F6-F7	155'	17'	172'	228NB 1400	28	28	0	
1	F8	130'	17'	107'	96 LED	4	0	4	
				147'	228NB 1400	28	28	0	
8	TOTALS					200	184	16	

GRID SUMMARY	
Name:	Track
Size:	Irregular
Spacing:	30.0' x 30.0'
Height:	3.0' above grade

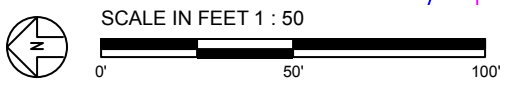
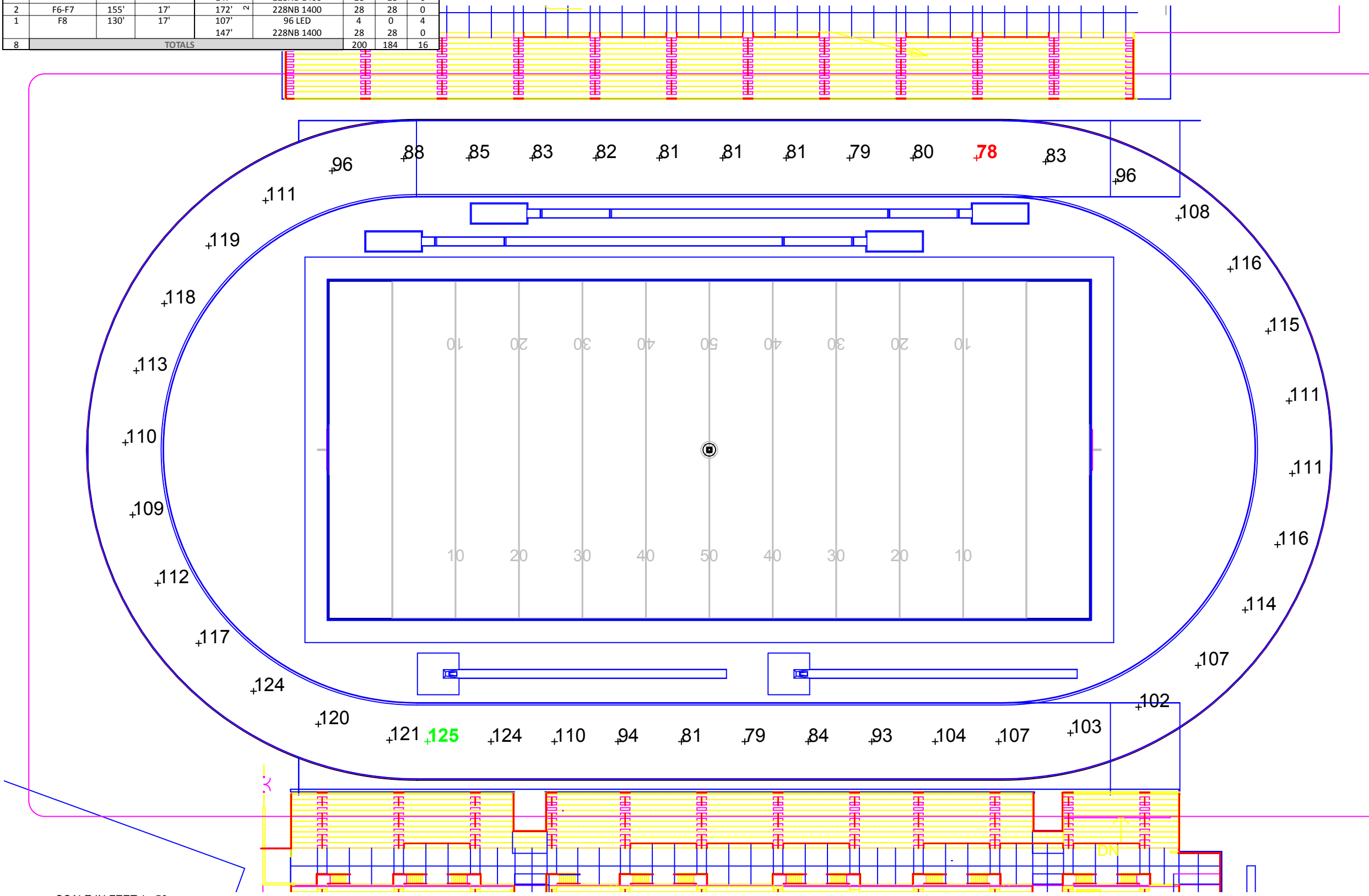
ILLUMINATION SUMMARY			
MAINTAINED TV FOOTCANDLES: Camera 1			
Entire Grid			
Guaranteed Average:	100		
Scan Average:	101.6		
Maximum:	125		
Minimum:	78		
Avg / Min:	1.30		
Guaranteed Max / Min:	1.7		
Max / Min:	1.60		
UG (adjacent pts):	0.00		
CU:	0.16		
No. of Points:	44		
LUMINAIRE INFORMATION			
Color / CRI:	5700K - 75 CRI		
Luminaire Output:	133,000 lumens		
Total LLF:	1.000		
No. of Luminaires:	184		
Total Load:	257.6 kW		
Lumen Maintenance			
Luminaire Type	L90 hrs	L80 hrs	L70 hrs
228NB 1400	>36,000	>36,000	>36,000
Reported per TM-21-11. See cutsheets for details.			

**Guaranteed Performance:** The ILLUMINATION described above is guaranteed per your Musco Warranty document and includes a 0.95 dirt depreciation factor.

**Field Measurements:** Individual field measurements may vary from computer-calculated predictions and should be taken in accordance with IESNA LM-5-04.

**Electrical System Requirements:** Refer to Amperage Draw Chart and/or the "Musco Control System Summary" for electrical sizing.

**Installation Requirements:** Results assume +/- 5% nominal voltage at line side of the driver and structures located within 3 feet (1m) of design locations.



Pole location(s) ⊕ dimensions are relative to 0,0 reference point(s) ⊗



**We Make It Happen.**

EQUIPMENT LIST FOR AREAS SHOWN									
Pole				Luminaires					
QTY	LOCATION	SIZE	GRADE ELEVATION	MOUNTING HEIGHT	LUMINAIRE TYPE	QTY / POLE	THIS GRID	OTHER GRIDS	
2	F1, F4	100'	18'	98'	96 LED	2	0	2	
				118'	228NB 1400	18	18	0	
2	F2-F3	100'	29'	109'	96 LED	2	0	2	
				129'	228NB 1400	18	18	0	
1	F5	147'	-	107'	96 LED	4	0	4	
				147'	228NB 1400	28	28	0	
2	F6-F7	155'	17'	172'	228NB 1400	28	28	0	
1	F8	130'	17'	107'	96 LED	4	0	4	
				147'	228NB 1400	28	28	0	
8	TOTALS					200	184	16	

GRID SUMMARY	
<b>Name:</b>	Track
<b>Size:</b>	Irregular
<b>Spacing:</b>	30.0' x 30.0'
<b>Height:</b>	3.0' above grade

ILLUMINATION SUMMARY	
MAINTAINED TV FOOTCANDLES: Camera 2	
Entire Grid	
<b>Guaranteed Average:</b>	<b>100</b>
Scan Average:	104.5
Maximum:	129
Minimum:	79
Avg / Min:	1.32
<b>Guaranteed Max / Min:</b>	<b>1.7</b>
Max / Min:	1.63
UG (adjacent pts):	0.00
CU:	0.16
No. of Points:	44

LUMINAIRE INFORMATION			
Color / CRI:	5700K - 75 CRI		
Luminaire Output:	133,000 lumens		
Total LLF:	1.000		
<b>No. of Luminaires:</b>	<b>184</b>		
Total Load:	257.6 kW		

Lumen Maintenance			
Luminaire Type	L90 hrs	L80 hrs	L70 hrs
228NB 1400	>36,000	>36,000	>36,000

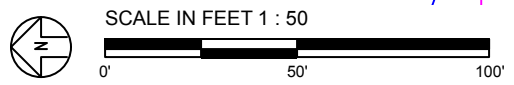
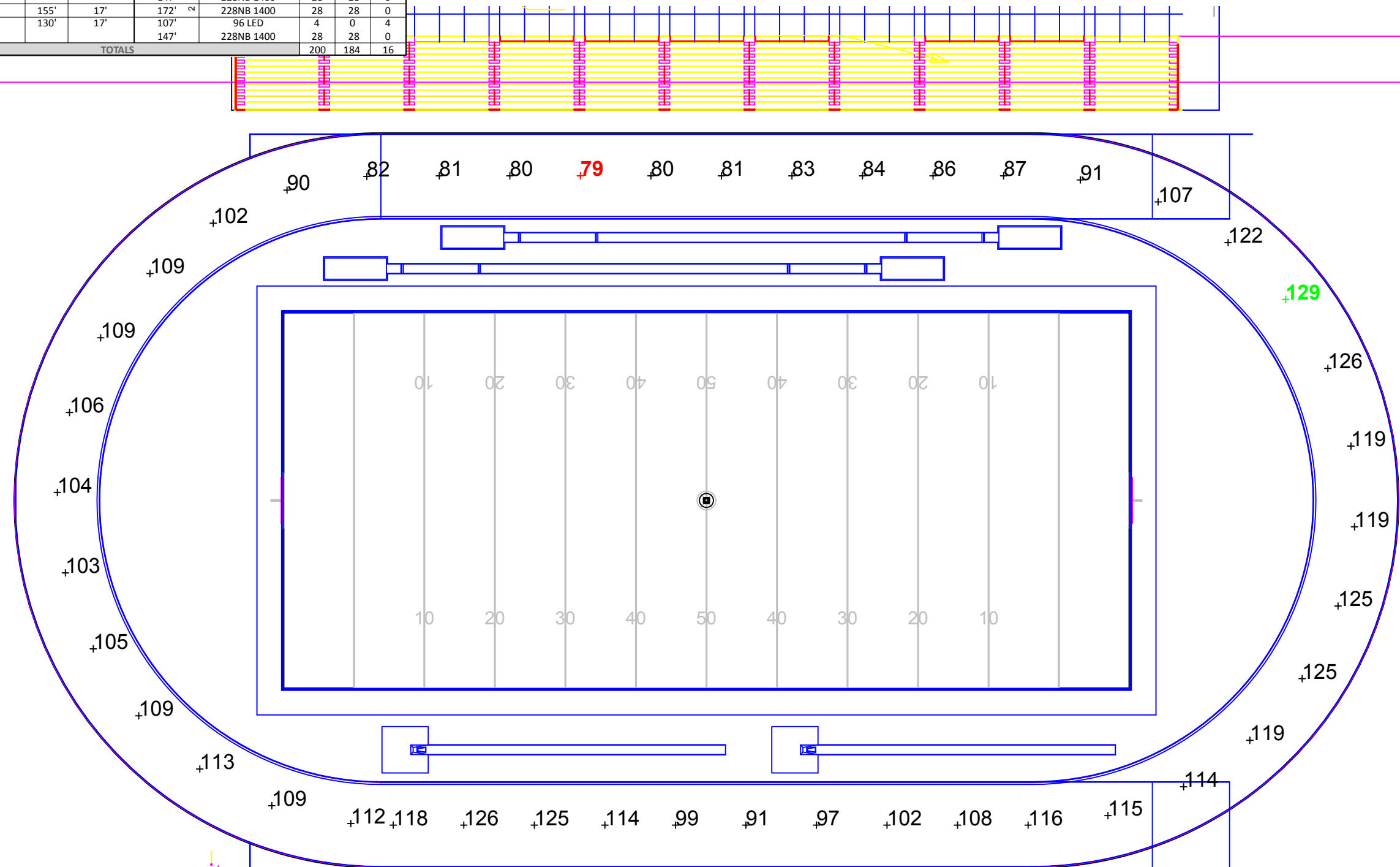
Reported per TM-21-11. See cutsheets for details.

**Guaranteed Performance:** The ILLUMINATION described above is guaranteed per your Musco Warranty document and includes a 0.95 dirt depreciation factor.

**Field Measurements:** Individual field measurements may vary from computer-calculated predictions and should be taken in accordance with IESNA LM-5-04.

**Electrical System Requirements:** Refer to Amperage Draw Chart and/or the "Musco Control System Summary" for electrical sizing.

**Installation Requirements:** Results assume +/- 5% nominal voltage at line side of the driver and structures located within 3 feet (1m) of design locations.



Pole location(s) ⊕ dimensions are relative to 0,0 reference point(s) ⊗

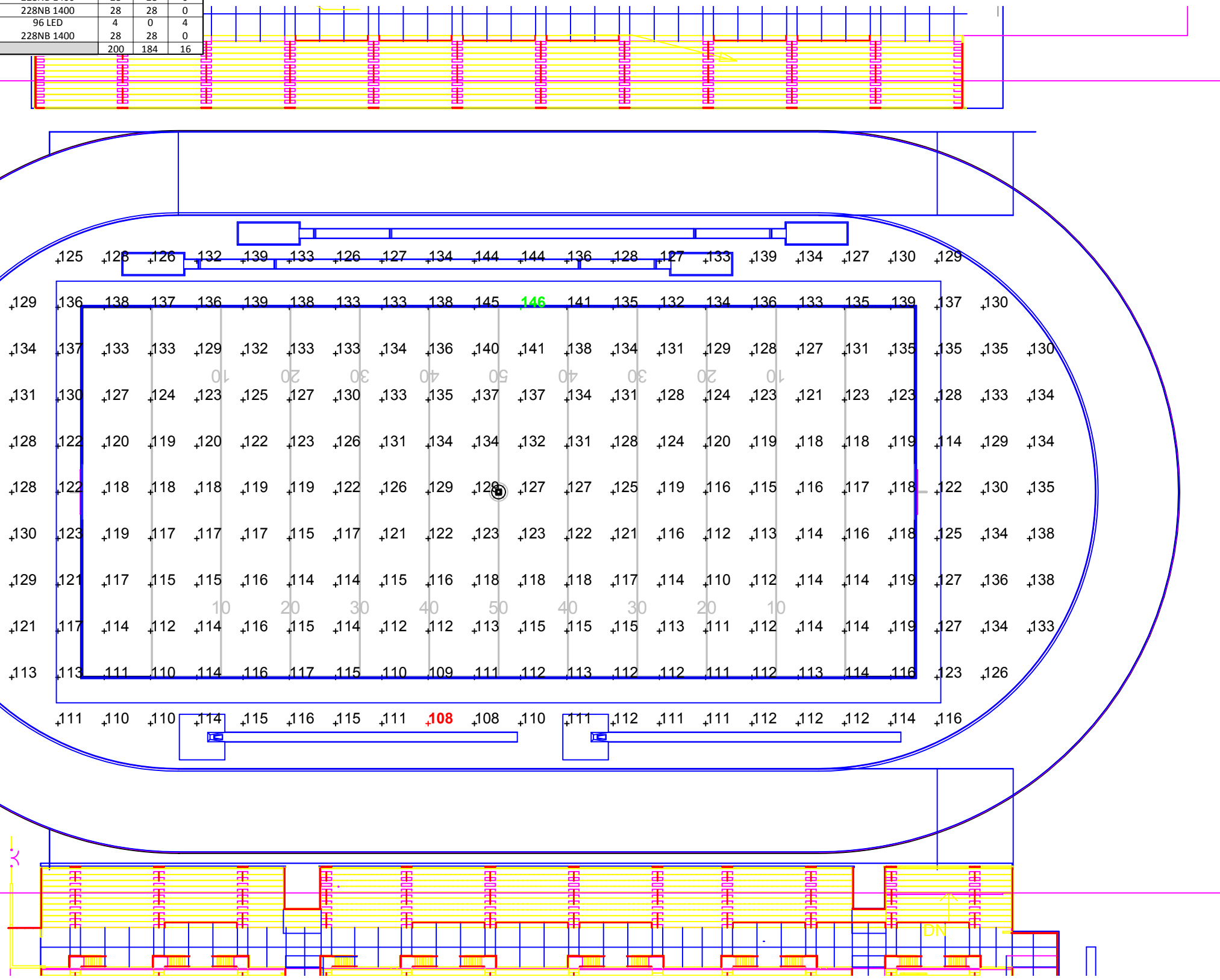


**Mt. SAC Athletics Complex East**  
Walnut, CA

EQUIPMENT LIST FOR AREAS SHOWN								
Pole			Luminaires					
QTY	LOCATION	SIZE	GRADE ELEVATION	MOUNTING HEIGHT	LUMINAIRE TYPE	QTY / POLE	THIS GRID	OTHER GRIDS
2	F1, F4	100'	18'	98'	96 LED	2	0	2
				118'	228NB 1400	18	18	0
2	F2-F3	100'	29'	109'	96 LED	2	0	2
				129'	228NB 1400	18	18	0
1	F5	147'	-	107'	96 LED	4	0	4
				147'	228NB 1400	28	28	0
2	F6-F7	155'	17'	172'	228NB 1400	28	28	0
1	F8	130'	17'	107'	96 LED	4	0	4
				147'	228NB 1400	28	28	0
8	TOTALS					200	184	16

GRID SUMMARY	
Name:	Track and Field Area
Size:	Irregular
Spacing:	20.0' x 20.0'
Height:	3.0' above grade

ILLUMINATION SUMMARY			
MAINTAINED HORIZONTAL FOOTCANDLES			
Entire Grid			
Guaranteed Average:	100		
Scan Average:	123.8		
Maximum:	146		
Minimum:	108		
Avg / Min:	1.15		
Guaranteed Max / Min:	1.7		
Max / Min:	1.35		
UG (adjacent pts):	1.14		
CU:	0.49		
Application Efficacy:	48.4		
No. of Points:	252		
LUMINAIRE INFORMATION			
Color / CRI:	5700K - 75 CRI		
Luminaire Output:	133,000 lumens		
Total LLF:	1.000		
No. of Luminaires:	184		
Total Load:	257.6 kW		
Lumen Maintenance			
Luminaire Type	L90 hrs	L80 hrs	L70 hrs
228NB 1400	>36,000	>36,000	>36,000
Reported per TM-21-11. See cutsheets for details.			

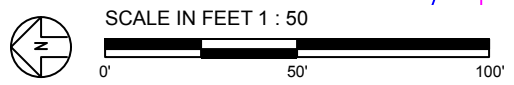


**Guaranteed Performance:** The ILLUMINATION described above is guaranteed per your Musco Warranty document and includes a 0.95 dirt depreciation factor.

**Field Measurements:** Individual field measurements may vary from computer-calculated predictions and should be taken in accordance with IESNA LM-5-04.

**Electrical System Requirements:** Refer to Amperage Draw Chart and/or the "Musco Control System Summary" for electrical sizing.

**Installation Requirements:** Results assume +/- 5% nominal voltage at line side of the driver and structures located within 3 feet (1m) of design locations.



Pole location(s) ⊗ dimensions are relative to 0,0 reference point(s) ⊗

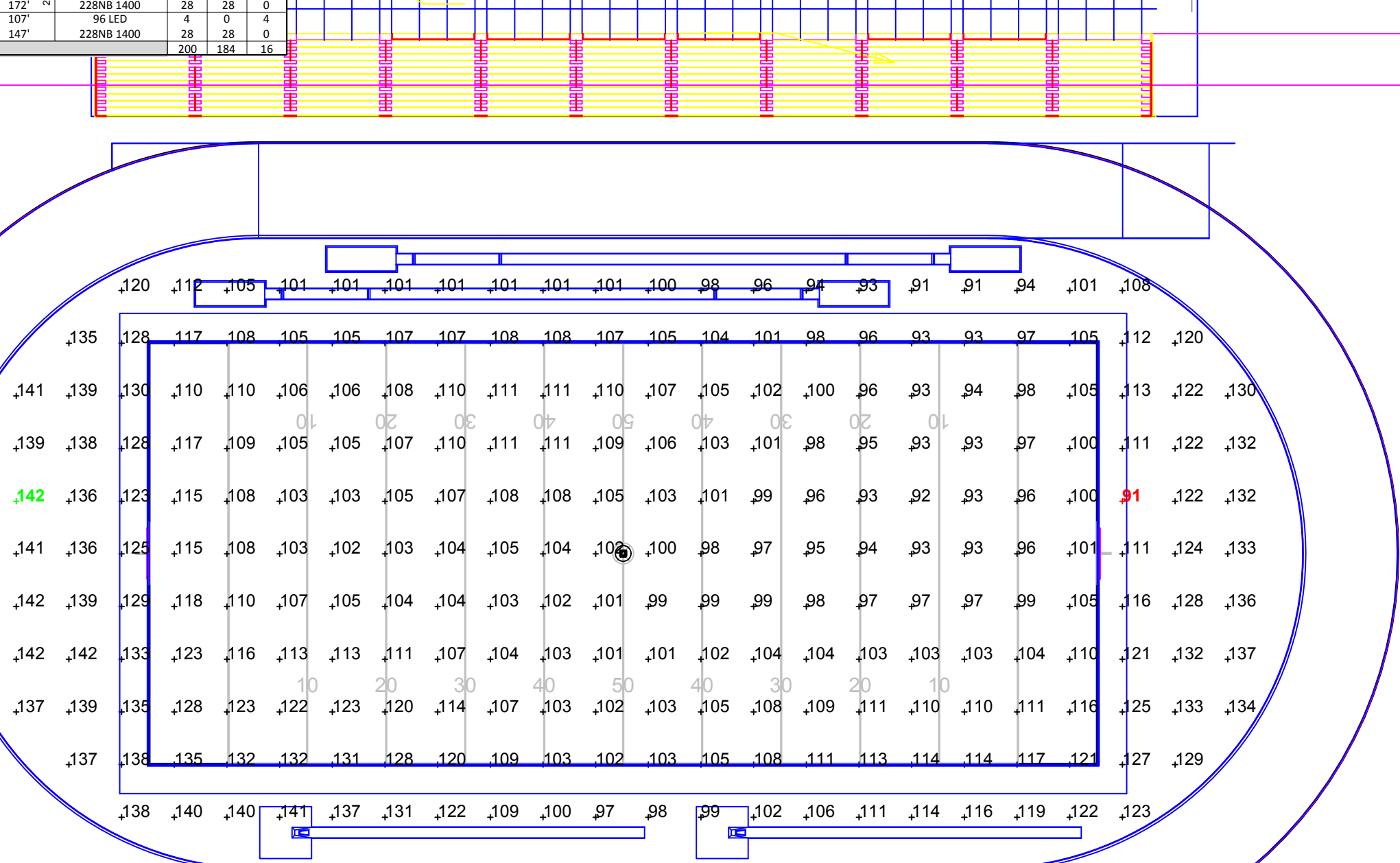




EQUIPMENT LIST FOR AREAS SHOWN								
Pole				Luminaires				
QTY	LOCATION	SIZE	GRADE ELEVATION	MOUNTING HEIGHT	LUMINAIRE TYPE	QTY / POLE	THIS GRID	OTHER GRIDS
2	F1, F4	100'	18'	98'	96 LED	2	0	2
				118'	228NB 1400	18	18	0
2	F2-F3	100'	29'	109'	96 LED	2	0	2
				129'	228NB 1400	18	18	0
1	F5	147'	-	107'	96 LED	4	0	4
				147'	228NB 1400	28	28	0
2	F6-F7	155'	17'	172'	228NB 1400	28	28	0
1	F8	130'	17'	107'	96 LED	4	0	4
				147'	228NB 1400	28	28	0
8	TOTALS					200	184	16

GRID SUMMARY	
Name:	Track and Field Area
Size:	Irregular
Spacing:	20.0' x 20.0'
Height:	3.0' above grade

ILLUMINATION SUMMARY			
MAINTAINED TV FOOTCANDLES: Camera 1			
Entire Grid			
Guaranteed Average:	100		
Scan Average:	111.2		
Maximum:	142		
Minimum:	91		
Avg / Min:	1.23		
Guaranteed Max / Min:	1.7		
Max / Min:	1.57		
UG (adjacent pts):	1.34		
CU:	0.49		
Application Efficacy:	48.4		
No. of Points:	252		
LUMINAIRE INFORMATION			
Color / CRI:	5700K - 75 CRI		
Luminaire Output:	133,000 lumens		
Total LLF:	1.000		
No. of Luminaires:	184		
Total Load:	257.6 kW		
Lumen Maintenance			
Luminaire Type	L90 hrs	L80 hrs	L70 hrs
228NB 1400	>36,000	>36,000	>36,000
Reported per TM-21-11. See cutsheets for details.			

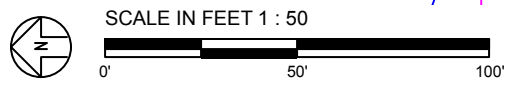


**Guaranteed Performance:** The ILLUMINATION described above is guaranteed per your Musco Warranty document and includes a 0.95 dirt depreciation factor.

**Field Measurements:** Individual field measurements may vary from computer-calculated predictions and should be taken in accordance with IESNA LM-5-04.

**Electrical System Requirements:** Refer to Amperage Draw Chart and/or the "Musco Control System Summary" for electrical sizing.

**Installation Requirements:** Results assume +/- 5% nominal voltage at line side of the driver and structures located within 3 feet (1m) of design locations.



Pole location(s) ⊕ dimensions are relative to 0,0 reference point(s) ⊗

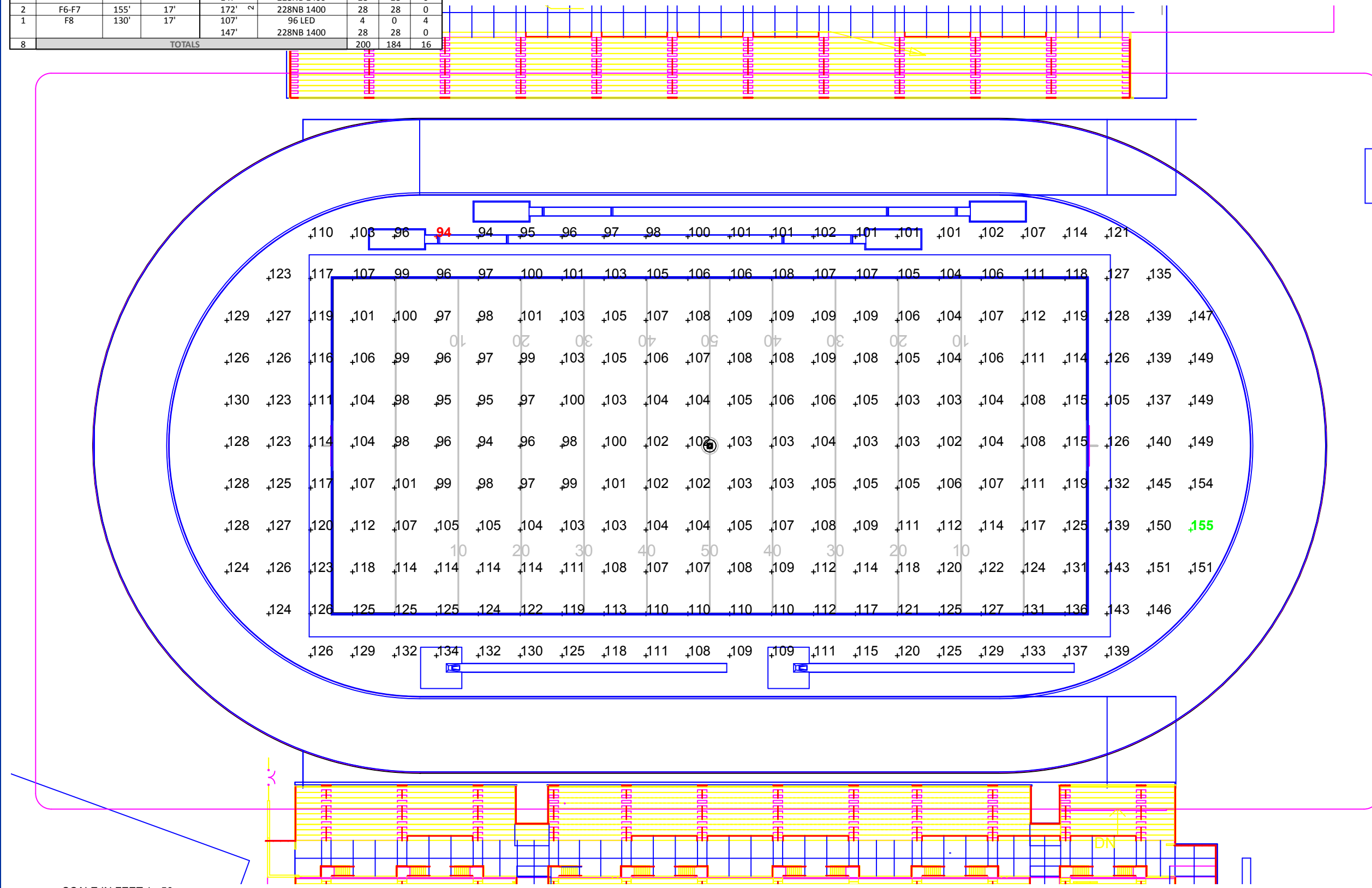


**Mt. SAC Athletics Complex East**  
Walnut, CA

EQUIPMENT LIST FOR AREAS SHOWN								
Pole			Luminaires					
QTY	LOCATION	SIZE	GRADE ELEVATION	MOUNTING HEIGHT	LUMINAIRE TYPE	QTY / POLE	THIS GRID	OTHER GRIDS
2	F1, F4	100'	18'	98'	96 LED	2	0	2
				118'	228NB 1400	18	18	0
2	F2-F3	100'	29'	109'	96 LED	2	0	2
				129'	228NB 1400	18	18	0
1	F5	147'	-	107'	96 LED	4	0	4
				147'	228NB 1400	28	28	0
2	F6-F7	155'	17'	172'	228NB 1400	28	28	0
1	F8	130'	17'	107'	96 LED	4	0	4
				147'	228NB 1400	28	28	0
8	TOTALS					200	184	16

GRID SUMMARY	
Name:	Track and Field Area
Size:	Irregular
Spacing:	20.0' x 20.0'
Height:	3.0' above grade

ILLUMINATION SUMMARY			
MAINTAINED TV FOOTCANDLES: Camera 2			
Entire Grid			
<b>Guaranteed Average:</b>	<b>100</b>		
Scan Average:	113.2		
Maximum:	155		
Minimum:	94		
Avg / Min:	1.21		
<b>Guaranteed Max / Min:</b>	<b>1.7</b>		
Max / Min:	1.66		
UG (adjacent pts):	1.31		
CU:	0.49		
Application Efficacy:	48.4		
No. of Points:	252		
LUMINAIRE INFORMATION			
Color / CRI:	5700K - 75 CRI		
Luminaire Output:	133,000 lumens		
Total LLF:	1.000		
<b>No. of Luminaires:</b>	<b>184</b>		
Total Load:	257.6 kW		
Lumen Maintenance			
Luminaire Type	L90 hrs	L80 hrs	L70 hrs
228NB 1400	>36,000	>36,000	>36,000
Reported per TM-21-11. See cutsheets for details.			

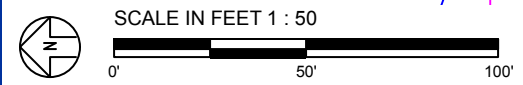


**Guaranteed Performance:** The ILLUMINATION described above is guaranteed per your Musco Warranty document and includes a 0.95 dirt depreciation factor.

**Field Measurements:** Individual field measurements may vary from computer-calculated predictions and should be taken in accordance with IESNA LM-5-04.

**Electrical System Requirements:** Refer to Amperage Draw Chart and/or the "Musco Control System Summary" for electrical sizing.

**Installation Requirements:** Results assume +/- 5% nominal voltage at line side of the driver and structures located within 3 feet (1m) of design locations.



Pole location(s) ⊕ dimensions are relative to 0,0 reference point(s) ⊗



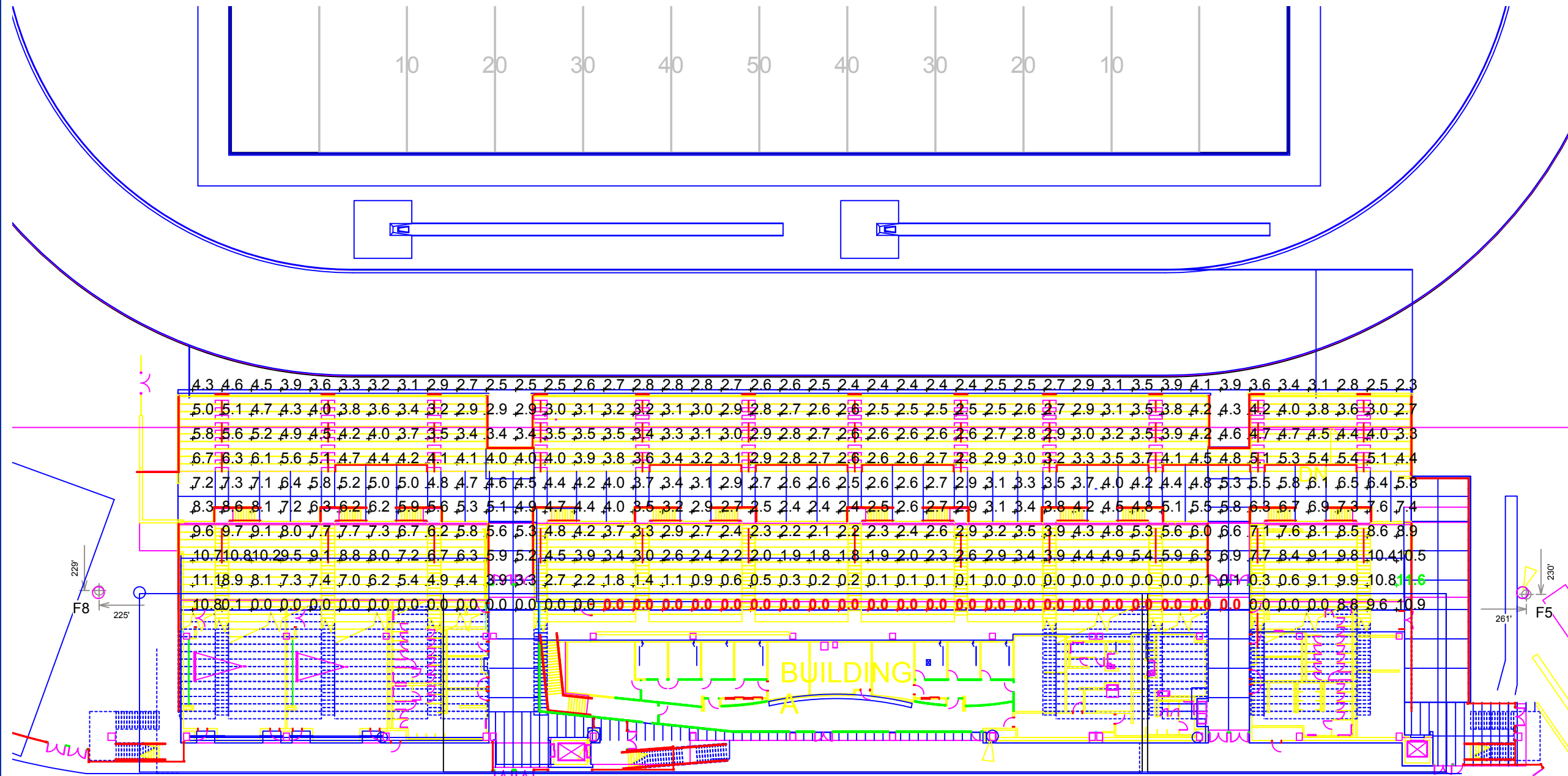
EQUIPMENT LIST FOR AREAS SHOWN								
Pole			Luminaires					
QTY	LOCATION	SIZE	GRADE ELEVATION	MOUNTING HEIGHT	LUMINAIRE TYPE	QTY / POLE	THIS GRID	OTHER GRIDS
1	F5	147'	-	107'	96 LED	4	4	0
				147'	228NB 1400	28	0	28
1	F8	130'	17'	107'	96 LED	4	4	0
				147'	228NB 1400	28	0	28
2	TOTALS					64	8	56

# Mt. SAC Athletics Complex East

Walnut, CA

GRID SUMMARY	
Name:	Home Bleacher
Size:	2' x 2'
Spacing:	10.0' x 10.0'

ILLUMINATION SUMMARY			
MAINTAINED HORIZONTAL FOOTCANDLES			
Entire Grid			
Scan Average:	3.8		
Maximum:	12		
Minimum:	0		
Avg / Min:	-		
Max / Min:	-		
UG (adjacent pts):	56137.23		
No. of Points:	420		
LUMINAIRE INFORMATION			
Color / CRI:	5700K - 75 CRI		
Luminaire Output:	38,600 lumens		
Total LLF:	1.000		
No. of Luminaires:	8		
Total Load:	3.15 kW		
Lumen Maintenance			
Luminaire Type	L90 hrs	L80 hrs	L70 hrs
96 LED	61,000	>72,000	>72,000
Reported per TM-21-11. See cutsheets for details.			

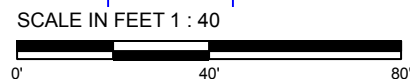


**Guaranteed Performance:** The ILLUMINATION described above is guaranteed per your Musco Warranty document and includes a 0.95 dirt depreciation factor.

**Field Measurements:** Individual field measurements may vary from computer-calculated predictions and should be taken in accordance with IESNA LM-5-04.

**Electrical System Requirements:** Refer to Amperage Draw Chart and/or the "Musco Control System Summary" for electrical sizing.

**Installation Requirements:** Results assume +/- 5% nominal voltage at line side of the driver and structures located within 3 feet (1m) of design locations.



Pole location(s) Ⓢ dimensions are relative to 0,0 reference point(s) ⊗



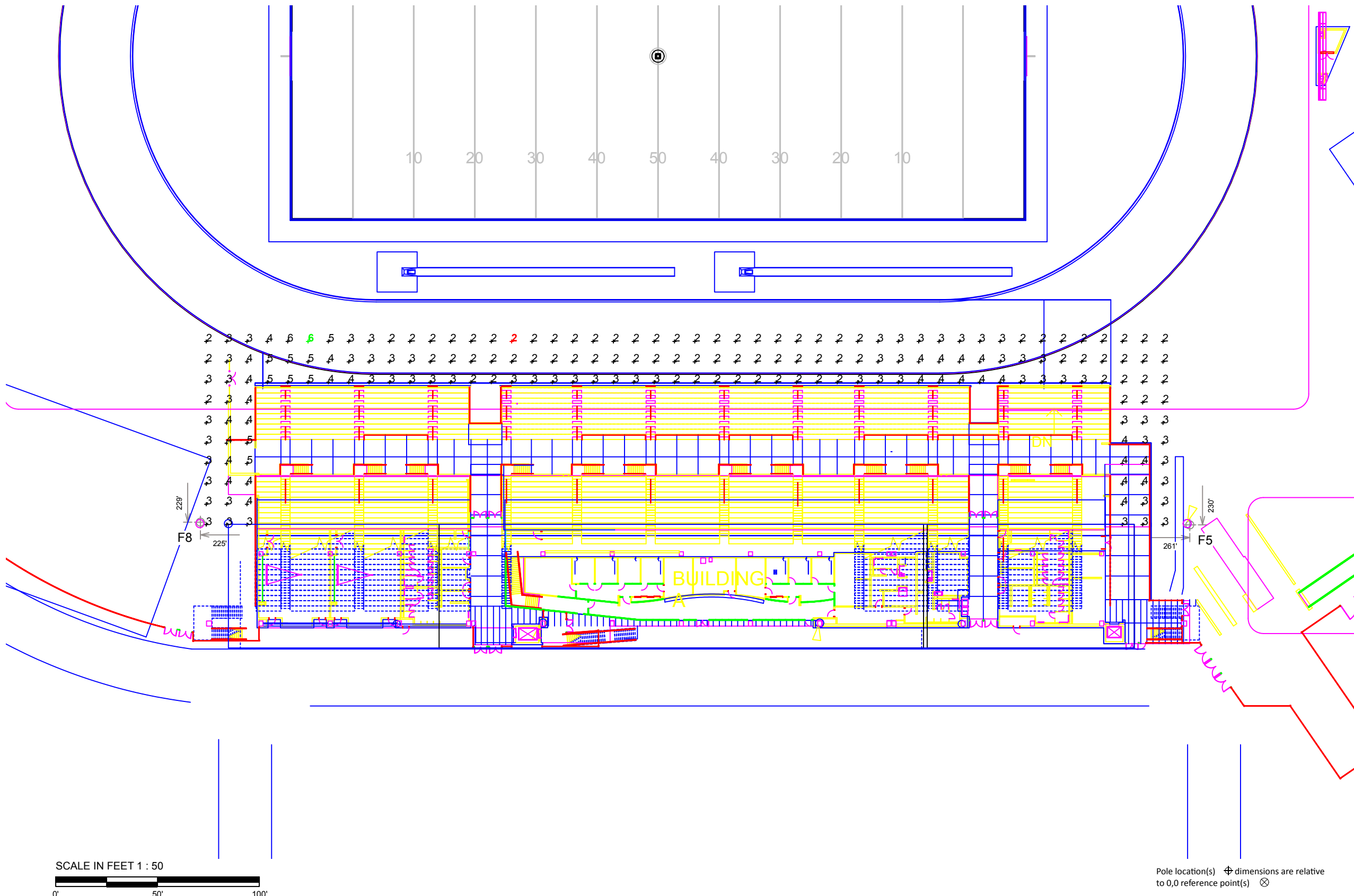
**We Make It Happen.**

**Mt. SAC Athletics Complex East**  
Walnut, CA

EQUIPMENT LIST FOR AREAS SHOWN								
Pole				Luminaires				
QTY	LOCATION	SIZE	GRADE ELEVATION	MOUNTING HEIGHT	LUMINAIRE TYPE	QTY / POLE	THIS GRID	OTHER GRIDS
1	F5	147'	-	107'	96 LED	4	4	0
				147'	228NB 1400	28	0	28
1	F8	130'	17'	107'	96 LED	4	4	0
				147'	228NB 1400	28	0	28
2	TOTALS					64	8	56

GRID SUMMARY	
Name:	Home Bleacher Area
Size:	2' x 2'
Spacing:	10.0' x 10.0'
Height:	3.0' above grade

ILLUMINATION SUMMARY			
MAINTAINED HORIZONTAL FOOTCANDLES			
Entire Grid			
Scan Average:	2.9		
Maximum:	6		
Minimum:	2		
Avg / Min:	1.72		
Max / Min:	3.40		
UG (adjacent pts):	1.42		
No. of Points:	186		
LUMINAIRE INFORMATION			
Color / CRI:	5700K - 75 CRI		
Luminaire Output:	38,600 lumens		
Total LLF:	1.000		
No. of Luminaires:	8		
Total Load:	3.15 kW		
Lumen Maintenance			
Luminaire Type	L90 hrs	L80 hrs	L70 hrs
96 LED	61,000	>72,000	>72,000
Reported per TM-21-11. See cutsheets for details.			

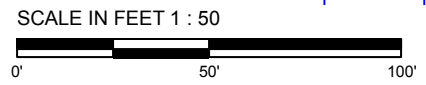


**Guaranteed Performance:** The ILLUMINATION described above is guaranteed per your Musco Warranty document and includes a 0.95 dirt depreciation factor.

**Field Measurements:** Individual field measurements may vary from computer-calculated predictions and should be taken in accordance with IESNA LM-5-04.

**Electrical System Requirements:** Refer to Amperage Draw Chart and/or the "Musco Control System Summary" for electrical sizing.

**Installation Requirements:** Results assume +/- 5% nominal voltage at line side of the driver and structures located within 3 feet (1m) of design locations.



Pole location(s) ⊕ dimensions are relative to 0,0 reference point(s) ⊗



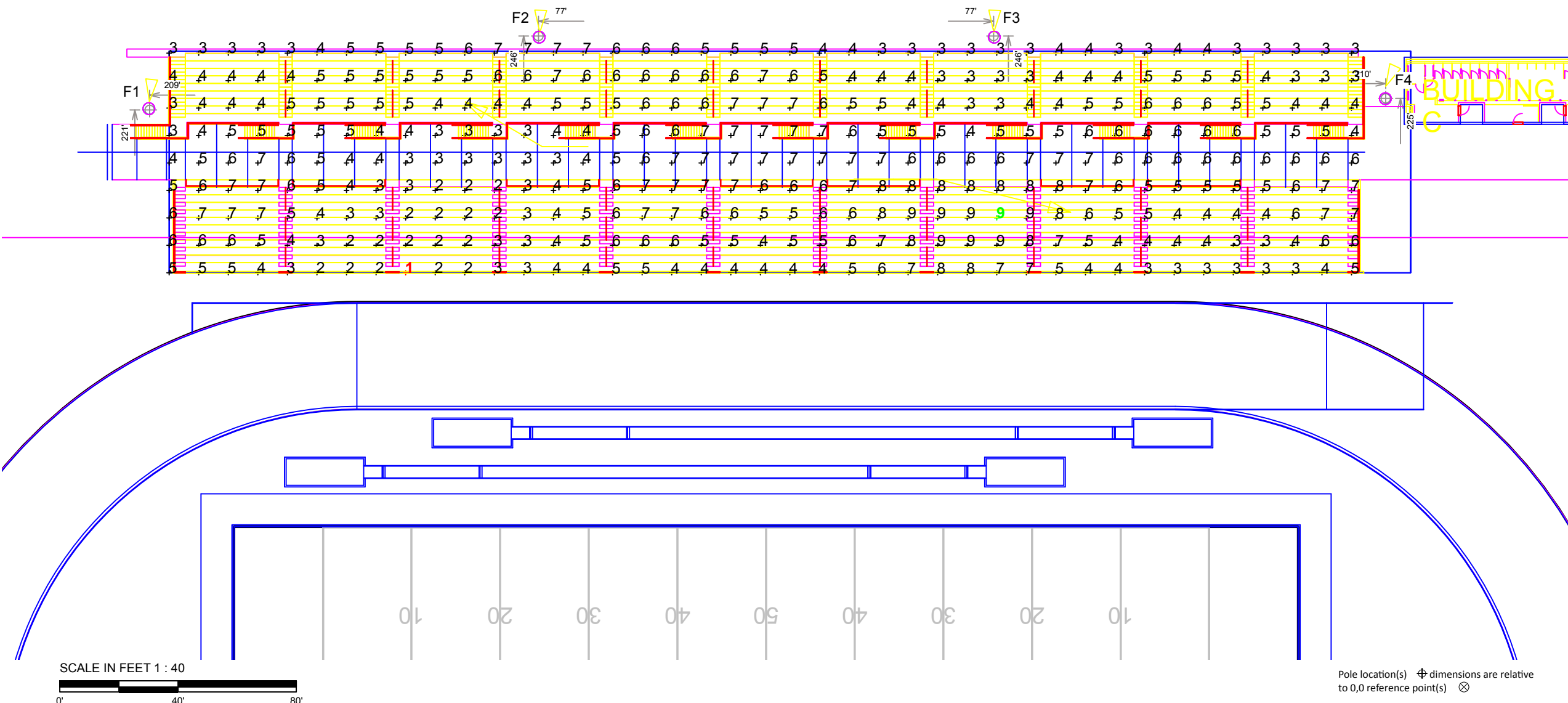
EQUIPMENT LIST FOR AREAS SHOWN								
Pole				Luminaires				
QTY	LOCATION	SIZE	GRADE ELEVATION	MOUNTING HEIGHT	LUMINAIRE TYPE	QTY / POLE	THIS GRID	OTHER GRIDS
2	F1, F4	100'	18'	98'	96 LED	2	2	0
				118'	228NB 1400	18	0	18
2	F2-F3	100'	29'	109'	96 LED	2	2	0
				129'	228NB 1400	18	0	18
4	TOTALS					80	8	72

## Mt. SAC Athletics Complex East

Walnut, CA

GRID SUMMARY	
Name:	Visitor Bleacher
Size:	2' x 2'
Spacing:	10.0' x 10.0'

ILLUMINATION SUMMARY			
MAINTAINED HORIZONTAL FOOTCANDLES			
Entire Grid			
Scan Average:	5.0		
Maximum:	9		
Minimum:	1		
Avg / Min:	3.36		
Max / Min:	6.04		
UG (adjacent pts):	1.43		
No. of Points:	369		
LUMINAIRE INFORMATION			
Color / CRI:	5700K - 75 CRI		
Luminaire Output:	38,600 lumens		
Total LLF:	1.000		
No. of Luminaires:	8		
Total Load:	3.15 kW		
Lumen Maintenance			
Luminaire Type	L90 hrs	L80 hrs	L70 hrs
96 LED	61,000	>72,000	>72,000
Reported per TM-21-11. See cutsheets for details.			



**Guaranteed Performance:** The ILLUMINATION described above is guaranteed per your Musco Warranty document and includes a 0.95 dirt depreciation factor.

**Field Measurements:** Individual field measurements may vary from computer-calculated predictions and should be taken in accordance with IESNA LM-5-04.

**Electrical System Requirements:** Refer to Amperage Draw Chart and/or the "Musco Control System Summary" for electrical sizing.

**Installation Requirements:** Results assume +/- 5% nominal voltage at line side of the driver and structures located within 3 feet (1m) of design locations.



**We Make It Happen.**

Not to be reproduced in whole or part without the written consent of Musco Sports Lighting, LLC. ©1981, 2016 Musco Sports Lighting, LLC.

**EQUIPMENT LIST FOR AREAS SHOWN**

Pole				Luminaires				
QTY	LOCATION	SIZE	GRADE ELEVATION	MOUNTING HEIGHT	LUMINAIRE TYPE	QTY / POLE	THIS GRID	OTHER GRIDS
2	F1, F4	100'	18'	98'	96 LED	2	2	0
				118'	228NB 1400	18	0	18
2	F2-F3	100'	29'	109'	96 LED	2	2	0
				129'	228NB 1400	18	0	18
4	TOTALS					80	8	72

**Mt. SAC Athletics Complex East**

Walnut, CA

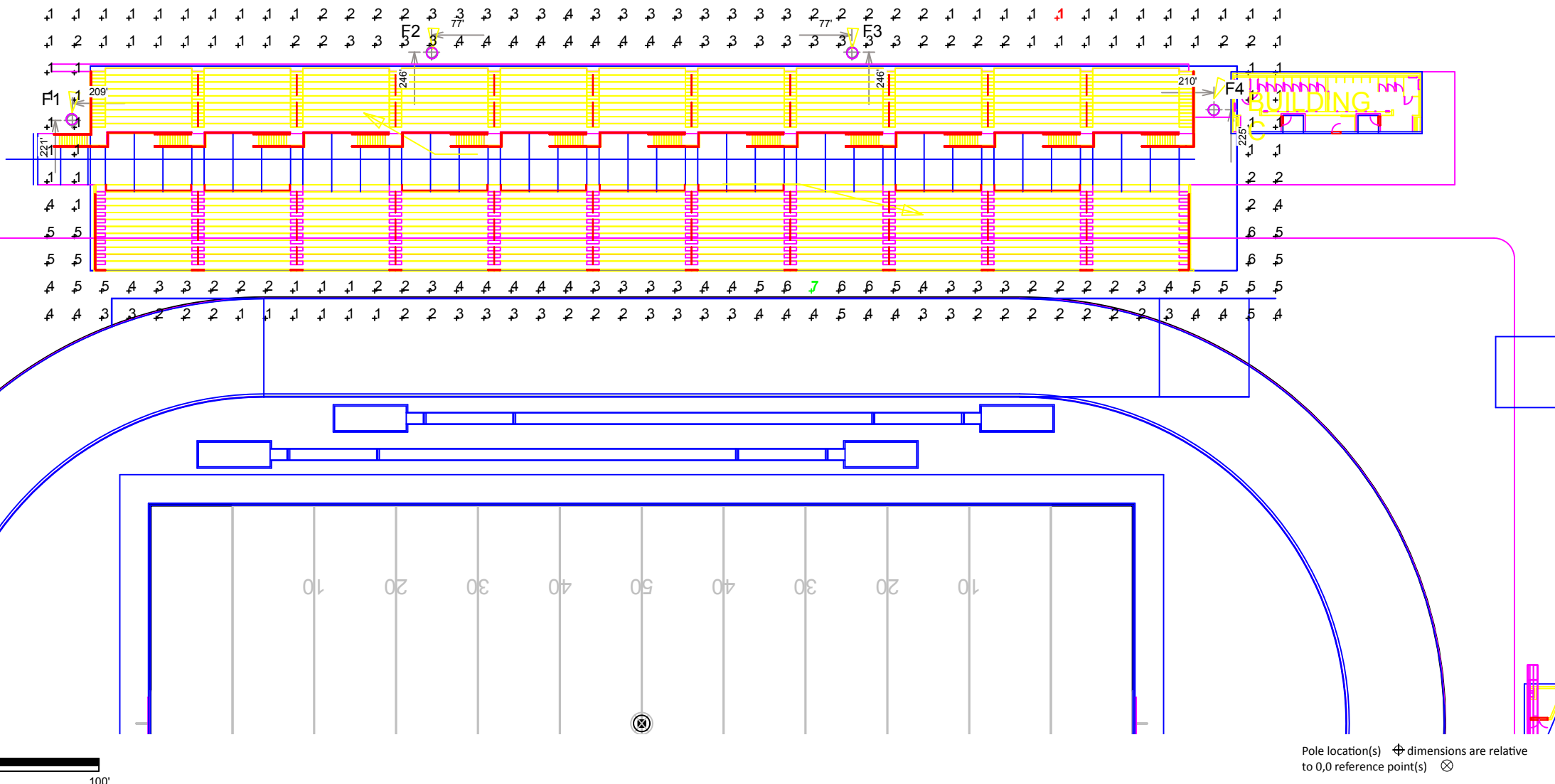
**GRID SUMMARY**

Name: Visitor Bleacher Area  
 Size: 2' x 2'  
 Spacing: 10.0' x 10.0'  
 Height: 3.0' above grade

**ILLUMINATION SUMMARY**

MAINTAINED HORIZONTAL FOOTCANDLES			
Entire Grid			
Scan Average:	2.6		
Maximum:	7		
Minimum:	1		
Avg / Min:	4.27		
Max / Min:	10.87		
UG (adjacent pts):	6.79		
No. of Points:	216		
LUMINAIRE INFORMATION			
Color / CRI:	5700K - 75 CRI		
Luminaire Output:	38,600 lumens		
Total LLF:	1.000		
No. of Luminaires:	8		
Total Load:	3.15 kW		
Lumen Maintenance			
Luminaire Type	L90 hrs	L80 hrs	L70 hrs
96 LED	61,000	>72,000	>72,000

Reported per TM-21-11. See cutsheets for details.



**Guaranteed Performance:** The ILLUMINATION described above is guaranteed per your Musco Warranty document and includes a 0.95 dirt depreciation factor.

**Field Measurements:** Individual field measurements may vary from computer-calculated predictions and should be taken in accordance with IESNA LM-5-04.

**Electrical System Requirements:** Refer to Amperage Draw Chart and/or the "Musco Control System Summary" for electrical sizing.

**Installation Requirements:** Results assume +/- 5% nominal voltage at line side of the driver and structures located within 3 feet (1m) of design locations.

SCALE IN FEET 1 : 50  
 0' 50' 100'

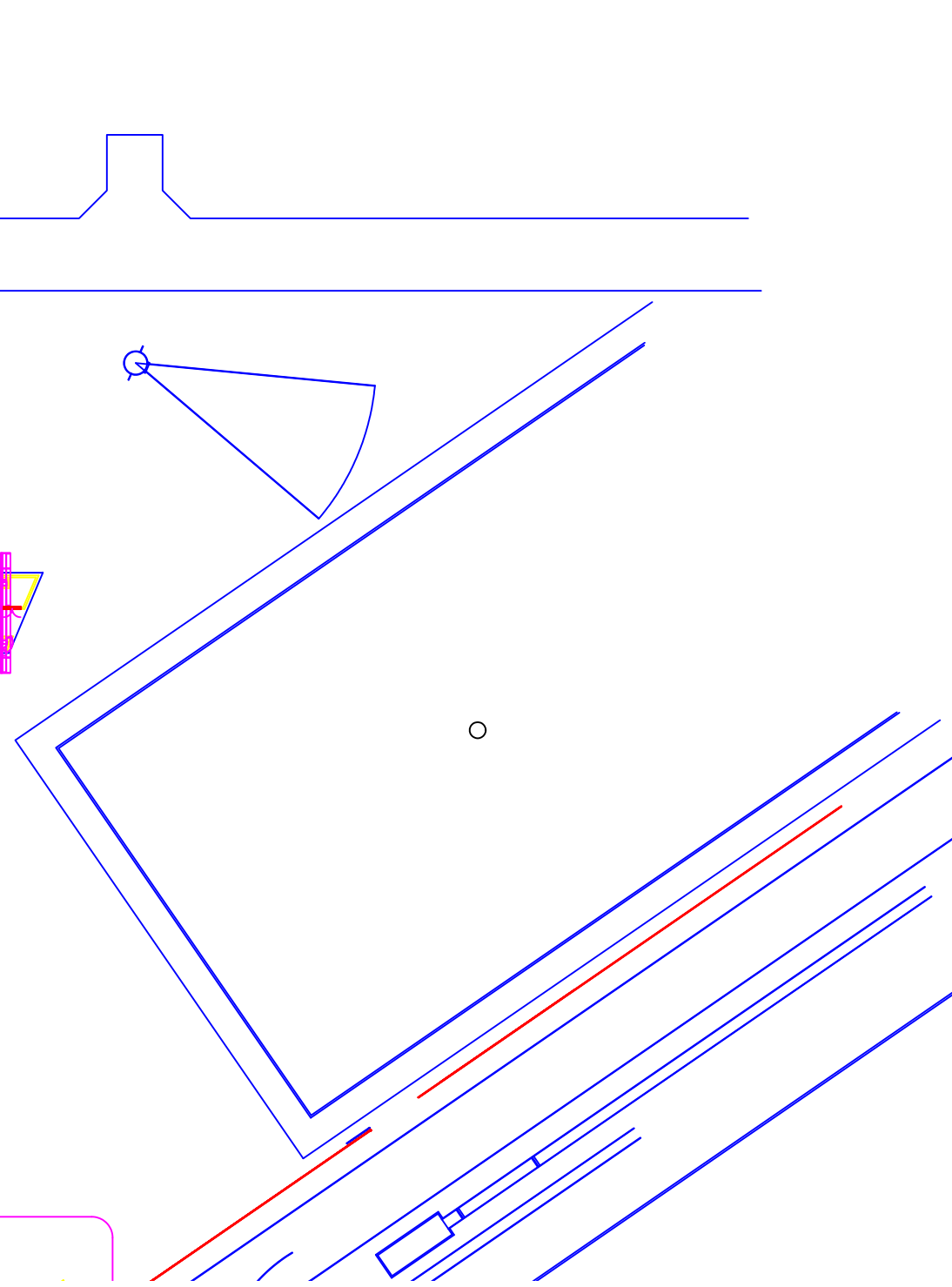
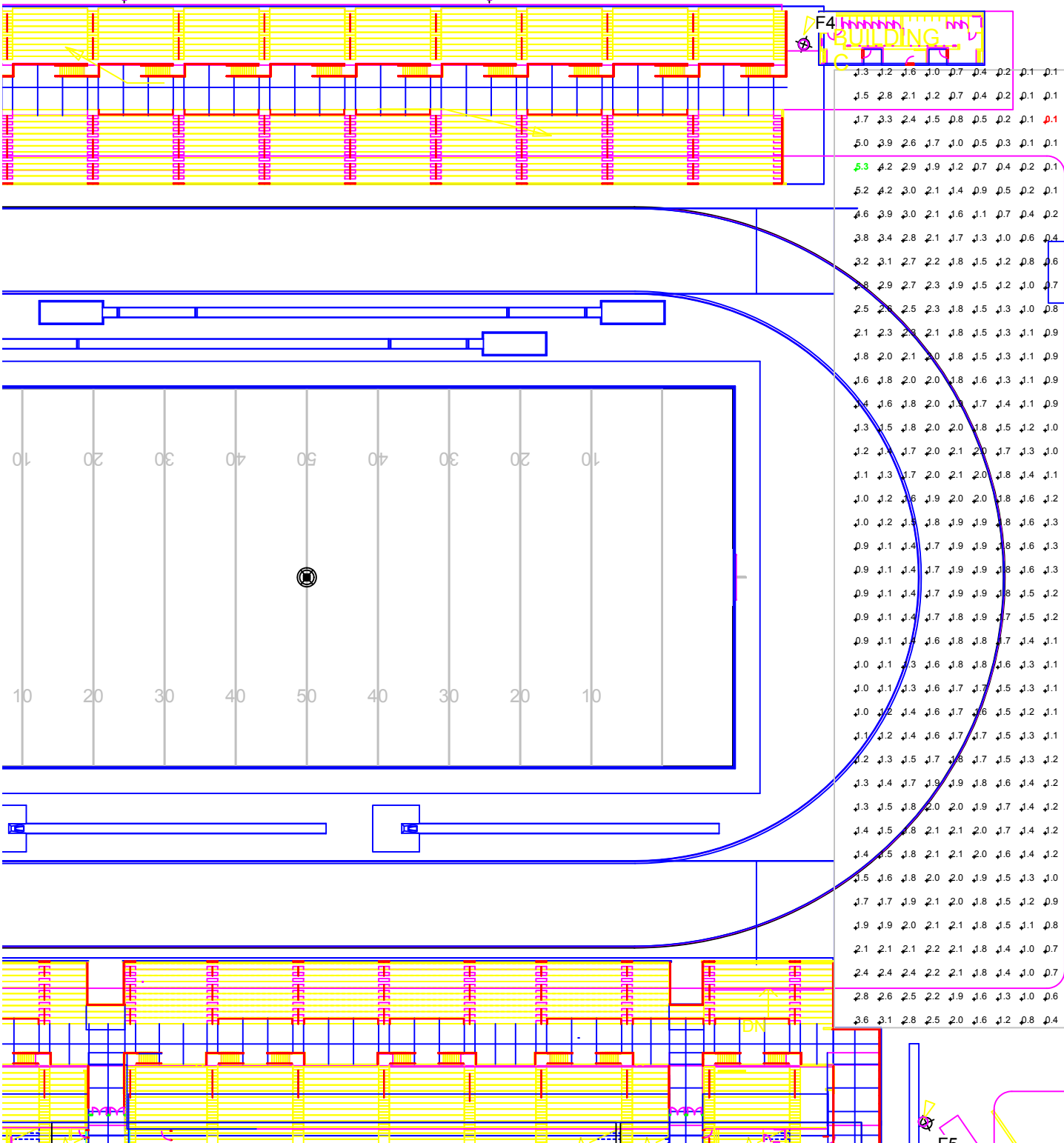
Pole location(s) ⊕ dimensions are relative to 0,0 reference point(s) ⊗



**We Make It Happen.**

Not to be reproduced in whole or part without the written consent of Musco Sports Lighting, LLC. ©1981, 2016 Musco Sports Lighting, LLC.

EQUIPMENT LIST FOR AREAS SHOWN								
Pole				Luminaires				
QTY	LOCATION	SIZE	GRADE ELEVATION	MOUNTING HEIGHT	LUMINAIRE TYPE	QTY / POLE	THIS GRID	OTHER GRIDS
2	F1, F4	100'	18'	98'	96 LED	2	2	0
				118'	228NB 1400	18	0	18
2	F2-F3	100'	29'	109'	96 LED	2	2	0
				129'	228NB 1400	18	0	18
1	F5	147'	-	107'	96 LED	4	4	0
				147'	228NB 1400	28	0	28
1	F8	130'	17'	107'	96 LED	4	4	0
	F2			147'	228NB 1400	28	F30	28
6	TOTALS					144	16	128



## Mt. SAC Athletics Complex East

Walnut, CA

GRID SUMMARY	
Name:	Dispersal Area
Spacing:	10.0' x 10.0'
Height:	3.0' above grade

ILLUMINATION SUMMARY			
MAINTAINED HORIZONTAL FOOTCANDLES			
Entire Grid			
Scan Average:	1.6		
Maximum:	5		
Minimum:	0		
Avg / Min:	25.56		
Max / Min:	84.31		
UG (adjacent pts):	2.87		
No. of Points:	369		
LUMINAIRE INFORMATION			
Color / CRI:	5700K - 75 CRI		
Luminaire Output:	38,600 lumens		
Total LLF:	1.000		
No. of Luminaires:	16		
Total Load:	6.3 kW		
Lumen Maintenance			
Luminaire Type	L90 hrs	L80 hrs	L70 hrs
96 LED	61,000	>72,000	>72,000
Reported per TM-21-11. See cutsheets for details.			

**Guaranteed Performance:** The ILLUMINATION described above is guaranteed per your Musco Warranty document and includes a 0.95 dirt depreciation factor.

**Field Measurements:** Individual field measurements may vary from computer-calculated predictions and should be taken in accordance with IESNA LM-5-04.

**Electrical System Requirements:** Refer to Amperage Draw Chart and/or the "Musco Control System Summary" for electrical sizing.

**Installation Requirements:** Results assume +/- 5% nominal voltage at line side of the driver and structures located within 3 feet (1m) of design locations.



Not to be reproduced in whole or part without the written consent of Musco Sports Lighting, LLC. ©1981, 2016 Musco Sports Lighting, LLC.

### ILLUMINATION SUMMARY