

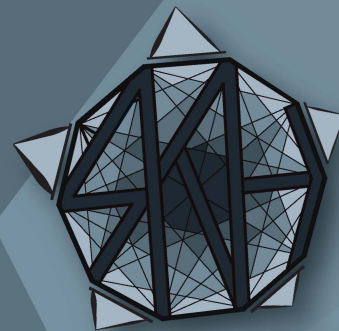


DESIGNING FROM THE MIDDLE

A portfolio by



RKH Design



RKH Design

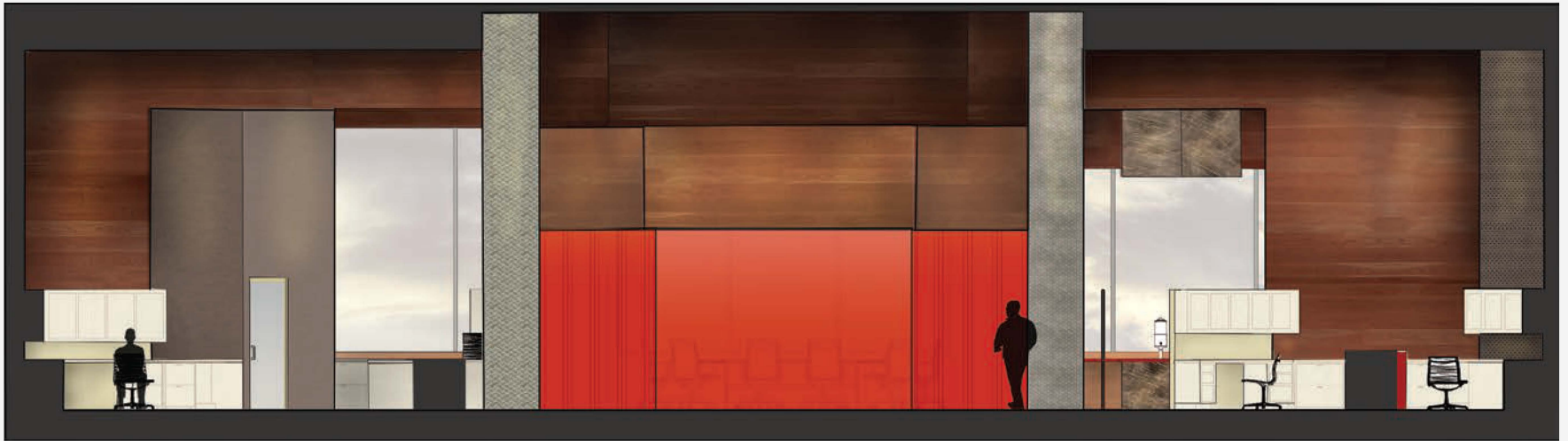
RKH DESIGN

SAN DIMAS, CA

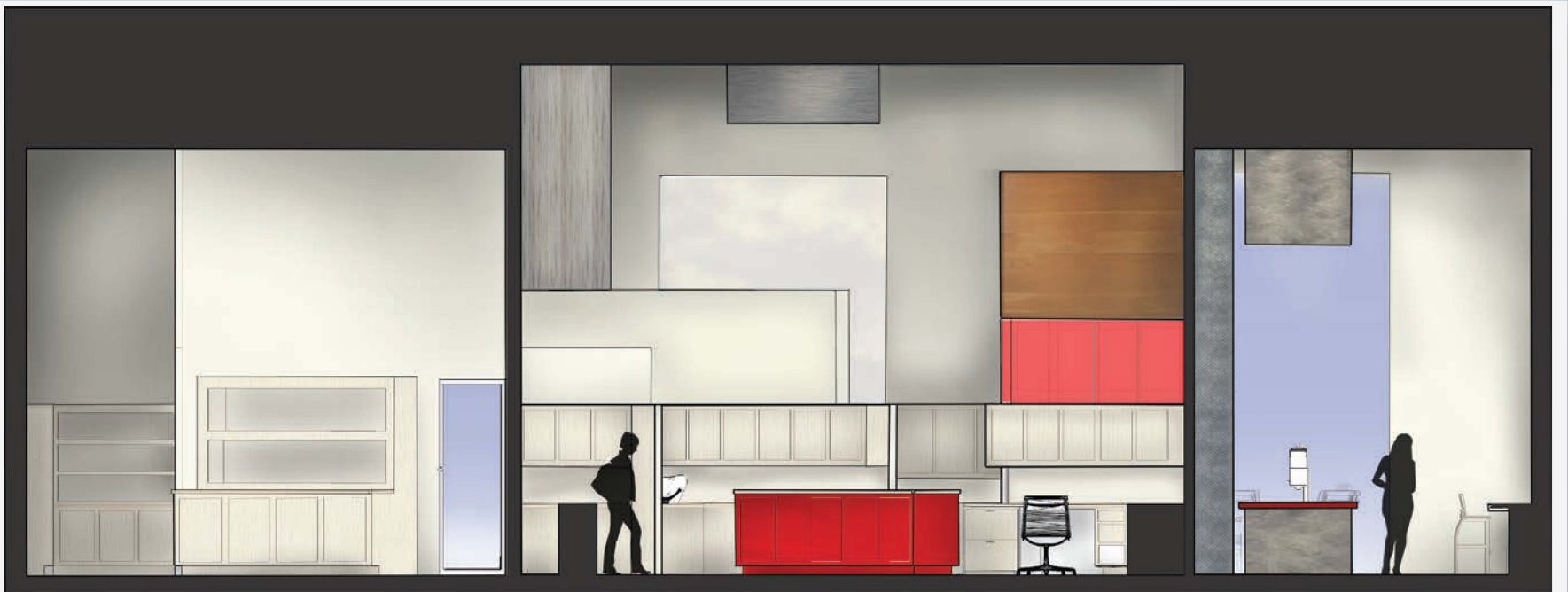
RKHDESIGN.HUU@GMAIL.COM

It Begins in the Middle

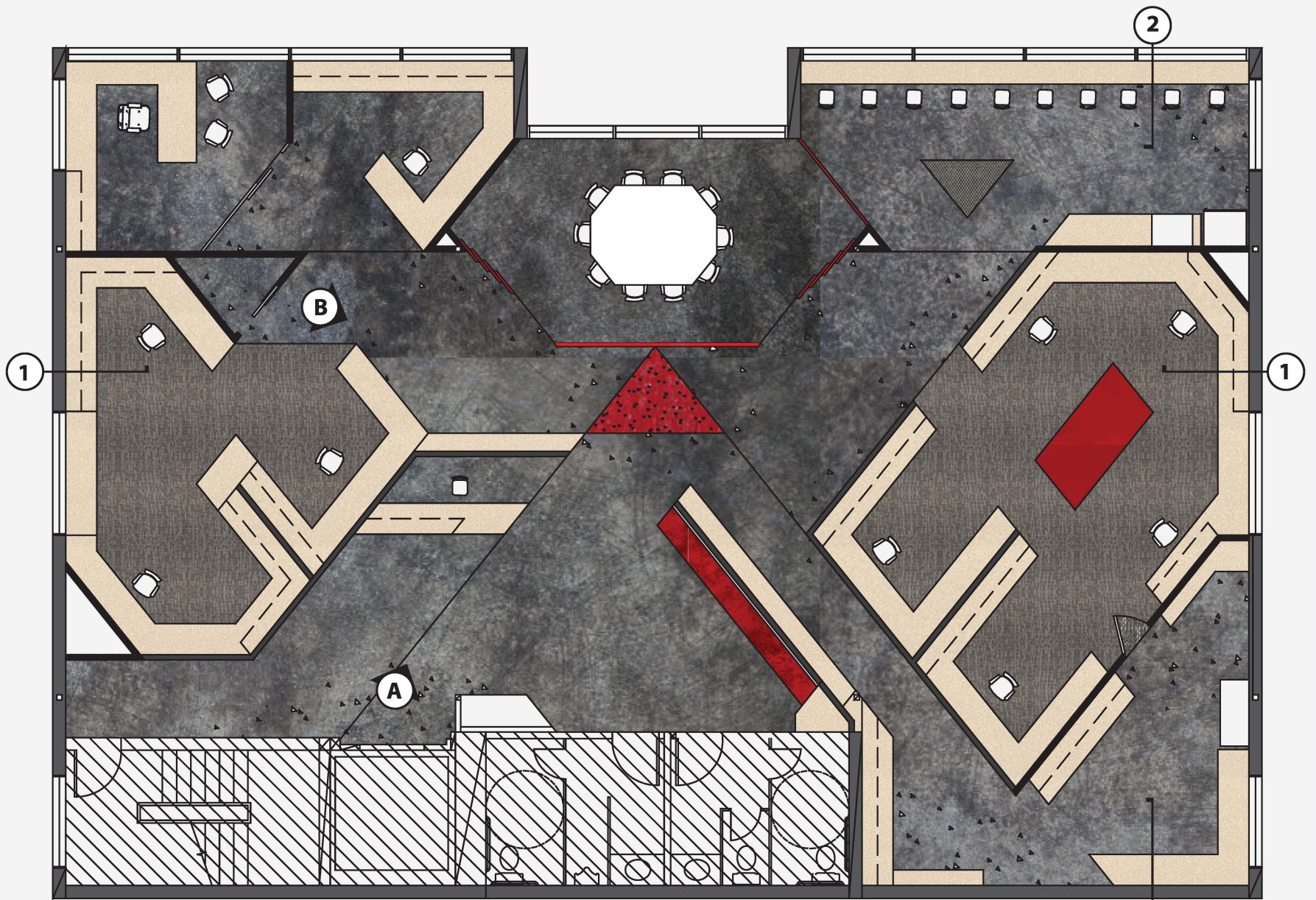
Intelligence is a quality that requires hours and days and years of work and study and experience to acquire. Intelligence in design is obtained in the same way; until talents and abilities and knowledge are stockpiled, ready to be called upon. When the moment comes it all begins at the core, at the root, at the center, where it's all stored waiting to be retrieved. Then it spreads out, creating and evolving and growing; becoming a design that can touch and stimulate the brain and the heart and the senses of those who witness. The design radiates out to the edges, but it all begins in the middle.



① elevation



② elevation



concrete -
red stain



concrete -
grey stain



grey carpet



red fabric
@ bench



red laminate



red glass

2

floorplan

Kellogg's

concept

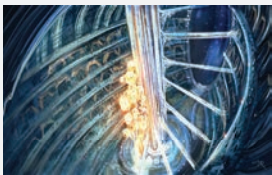


ESSENCE

: the basic, real, and invariable nature of a thing or its significant individual feature or features.



: Philosophy. the inward nature, true substance, or constitution of anything, as opposed to what is accidental, phenomenal, illusory, etc.



"Our Values are part of our DNA. They guide the way we work with our business partners, within our communities, and with each other."

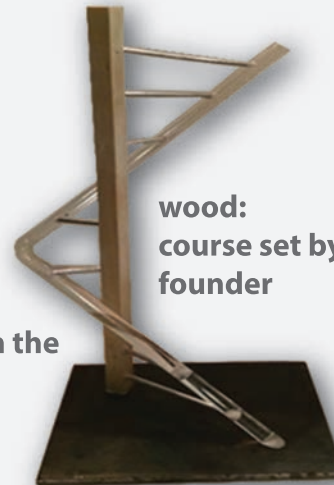


metal:
strength in diversity

concept sketches / model



glass:
hope in the future



wood:
course set by founder

It is important for a designer to understand the client; who they are, where they come from, and where they are going. From this a concept that drives every aspect of the design is formed.



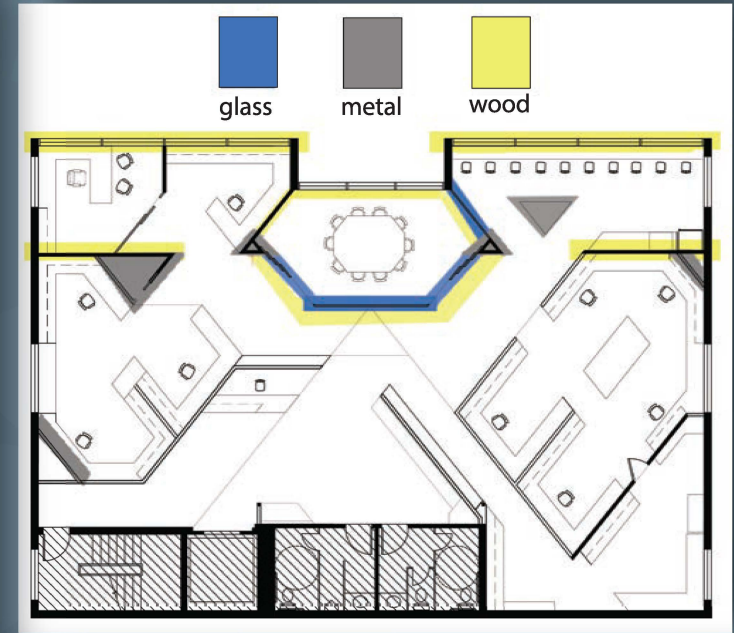
DESIGN WITH A CONCEPT

diversity

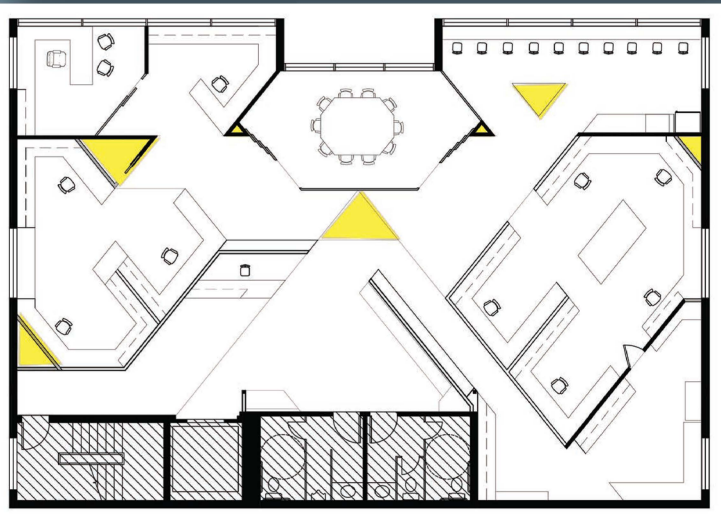
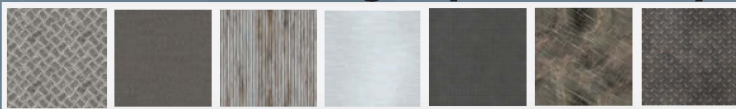


A lobby perspective

floorplans drawn in autocad, enhanced in photoshop



7 metals = 7 groups of diversity



perspectives drawn in google sketchup with vray
enhanced in photoshop



A conference perspective

floorplan drawn in autocad
enhanced in illustrator

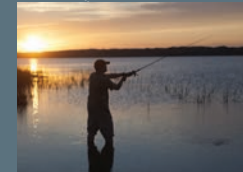
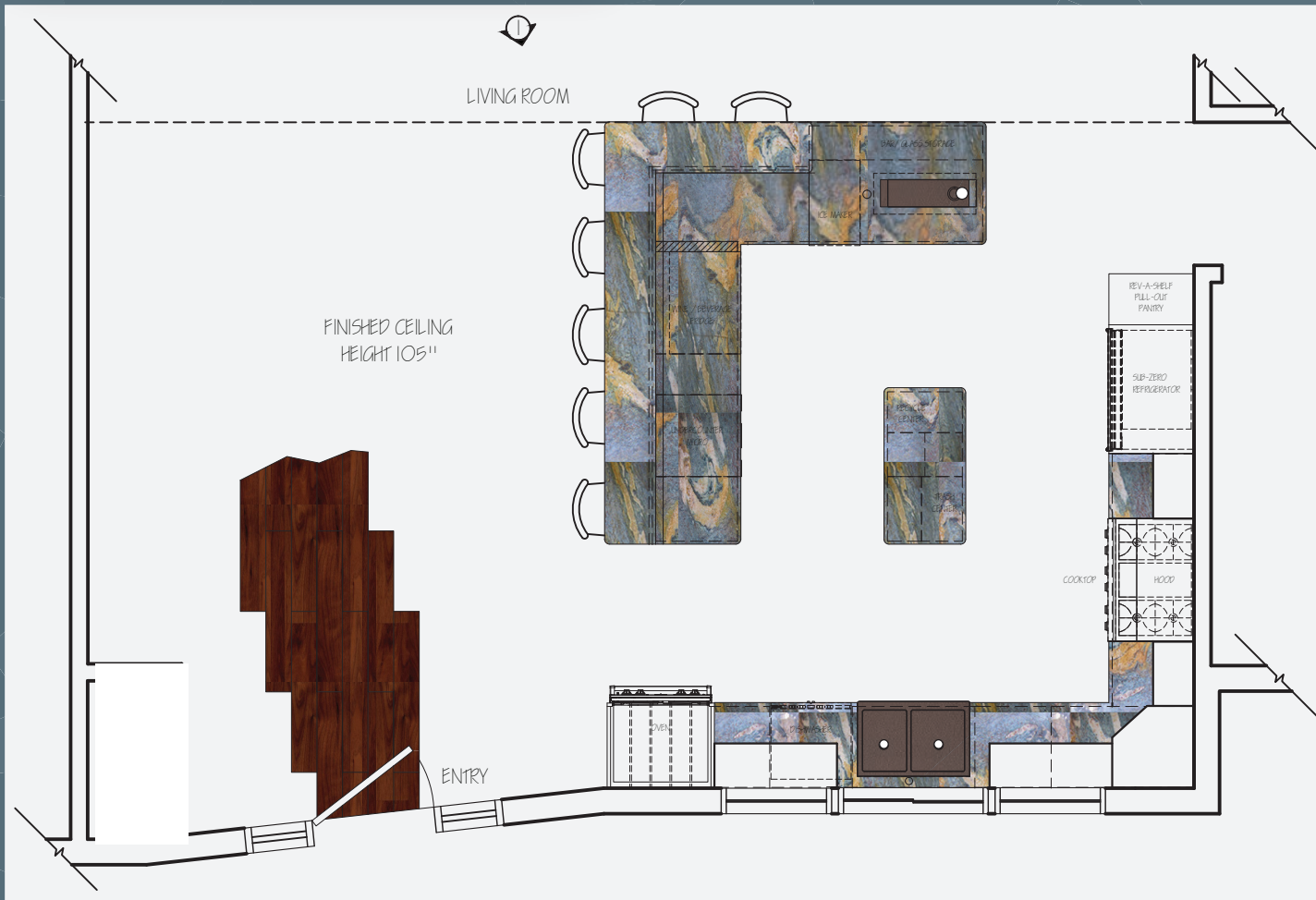
Understanding the location
and the lifestyle of the client
helps the designer choose
appropriate materials.
The right materials enhance a
design and help it tell a story.

A new kitchen in a 1 bedroom cabin,
built with lake views in Lincoln Nebraksa.



Nebraska is a prairie state, with a relatively
flat and simple landscape.

The owners enjoy lake activities and hosting
gatherings and game day parties.



MATERIAL CHOICES

kitchen design



1

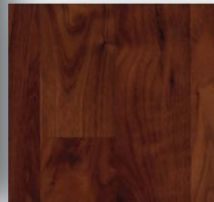
Natural materials are used multiple times to represent the simplicity of the landscape. The hammered finishes, swirling grain and veining represent the rippling waters of the lake and the homeowners active lifestyles.



pendant in dark bronze with "hammered" copper brown luster glass.



alder millwork and flooring. simple shaker door.



Van Gogh granite countertop and backsplash.



Viking french door oven in cobalt blue



hammered copper farmsink



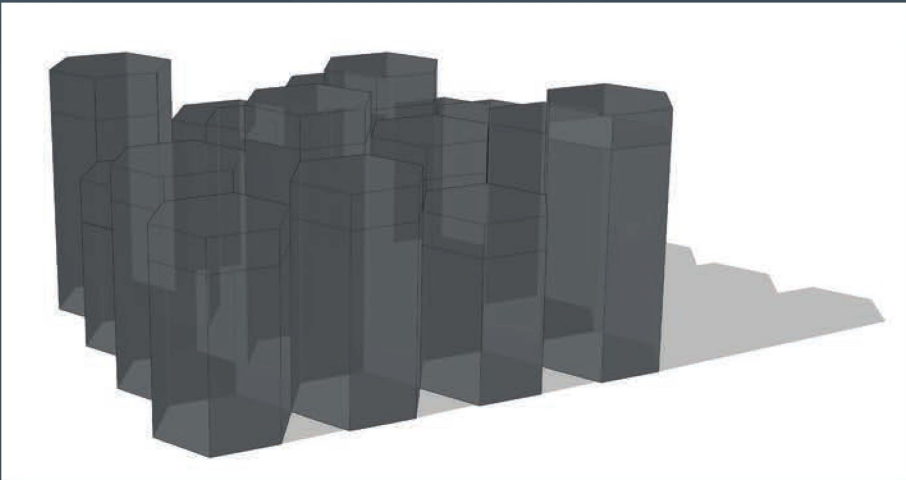
hammered copper bar sink



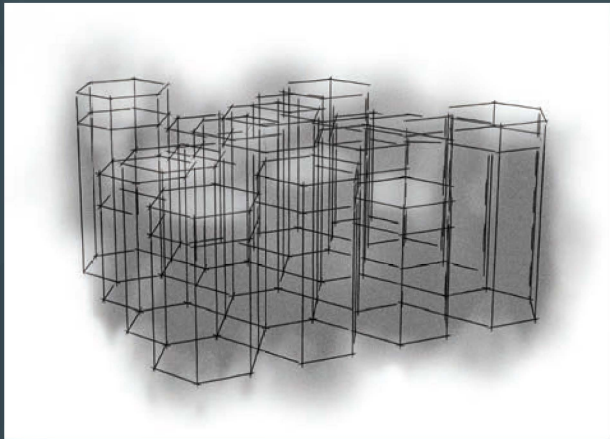
oil rubbed bronze faucets



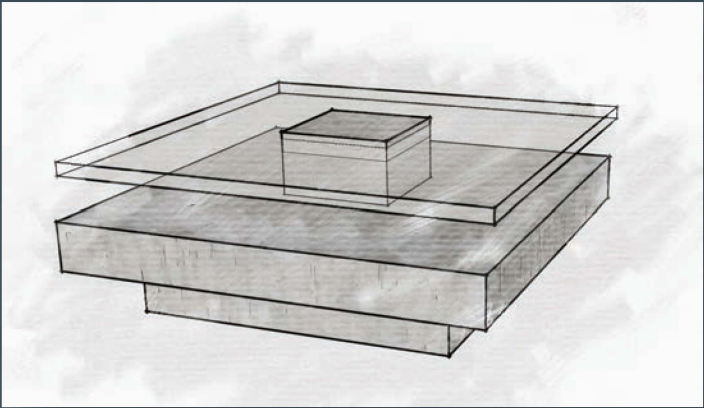
wall color: soft sunset



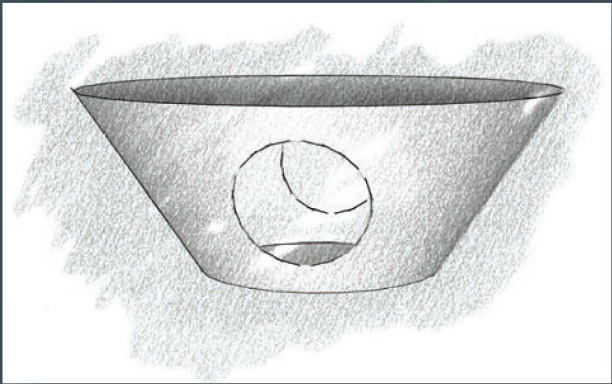
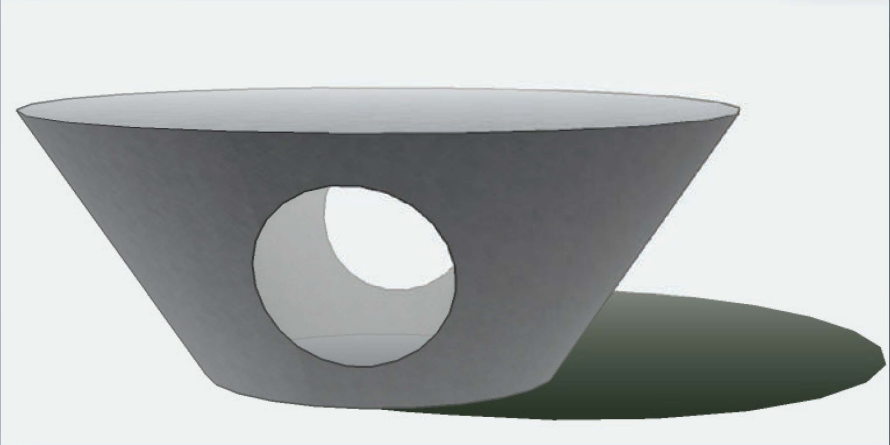
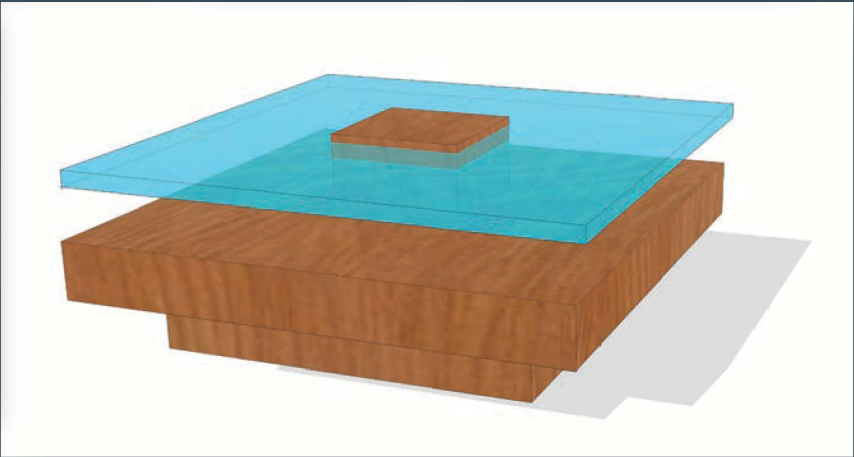
acrylic coffee table with removable lids



drawn in google sketchup, manipulated in photoshop



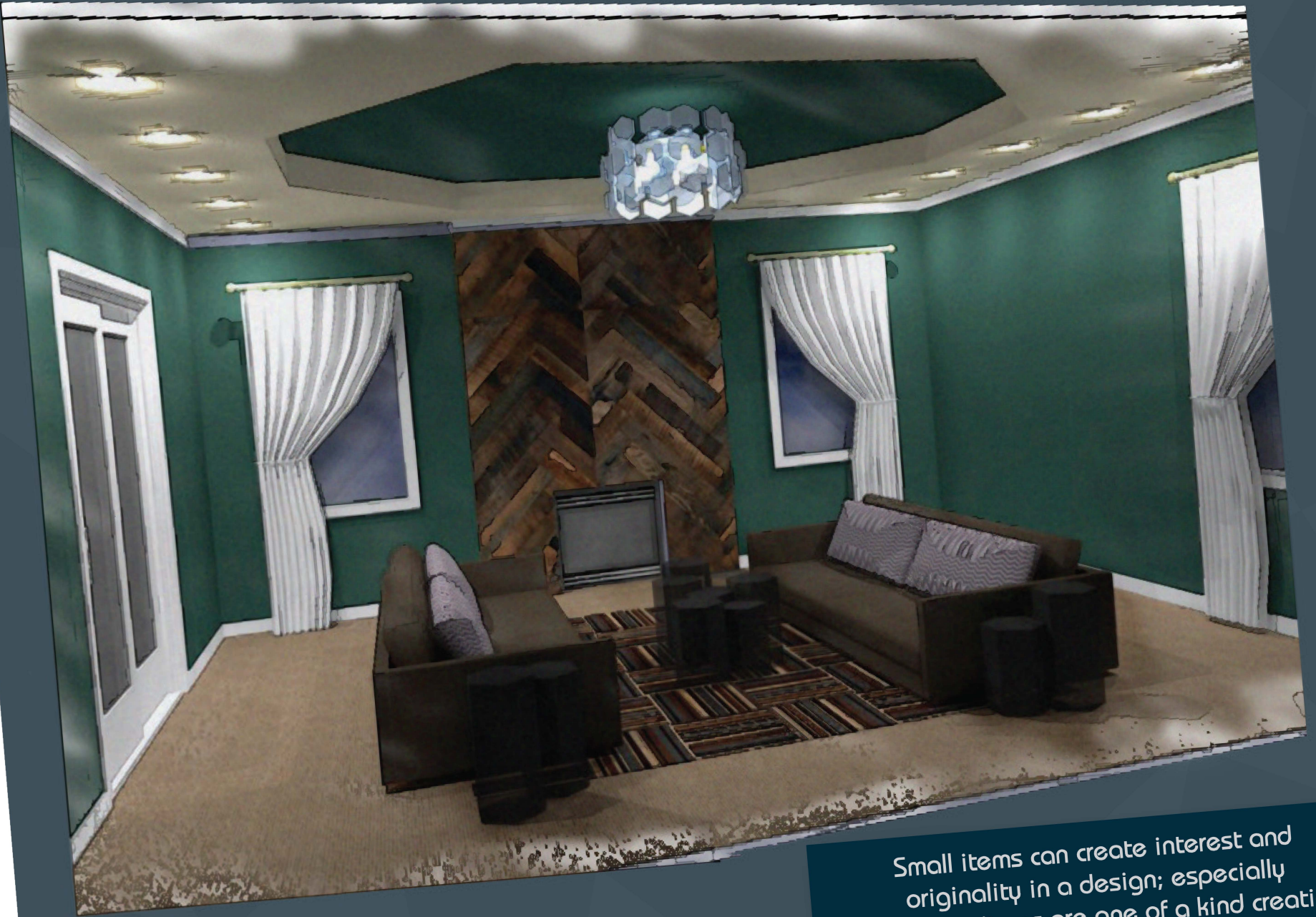
wood and cantilevered glass coffee table



poured concrete coffee table

SMALL DESIGNS

furniture

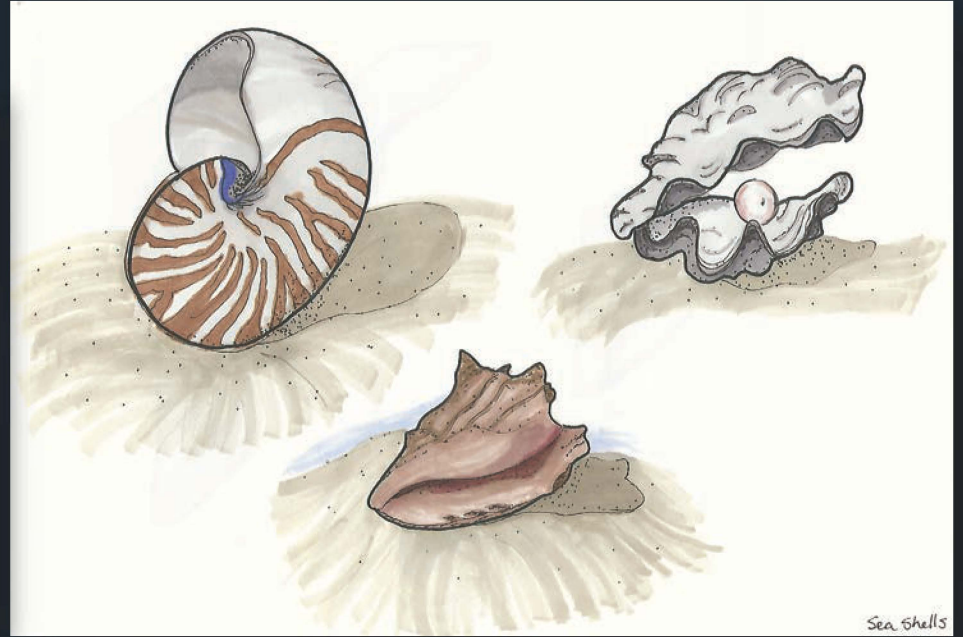


drawn in google sketchup with vray
manipulated in photoshop

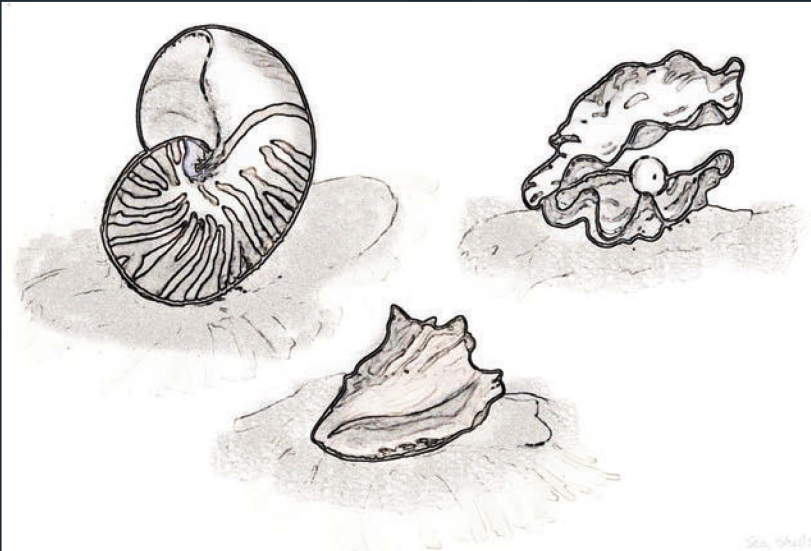
Small items can create interest and
originality in a design; especially
when those items are one of a kind creations
from the designer.



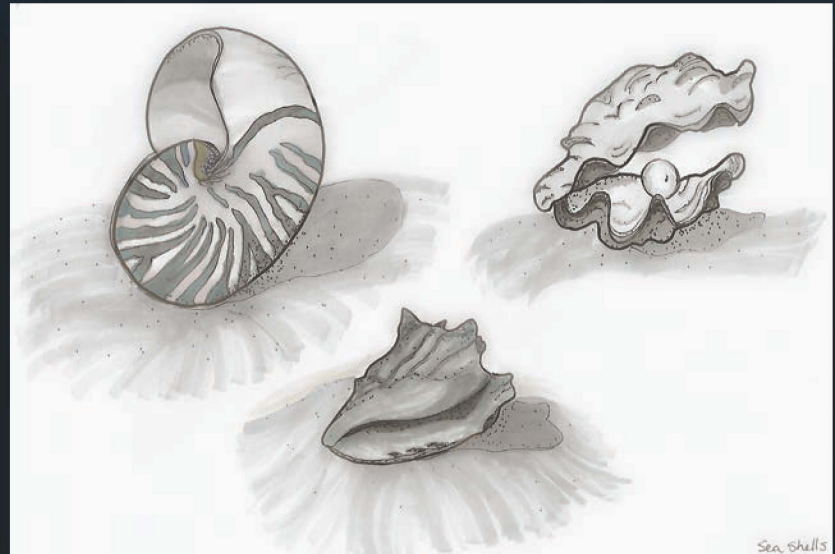
pastel



original



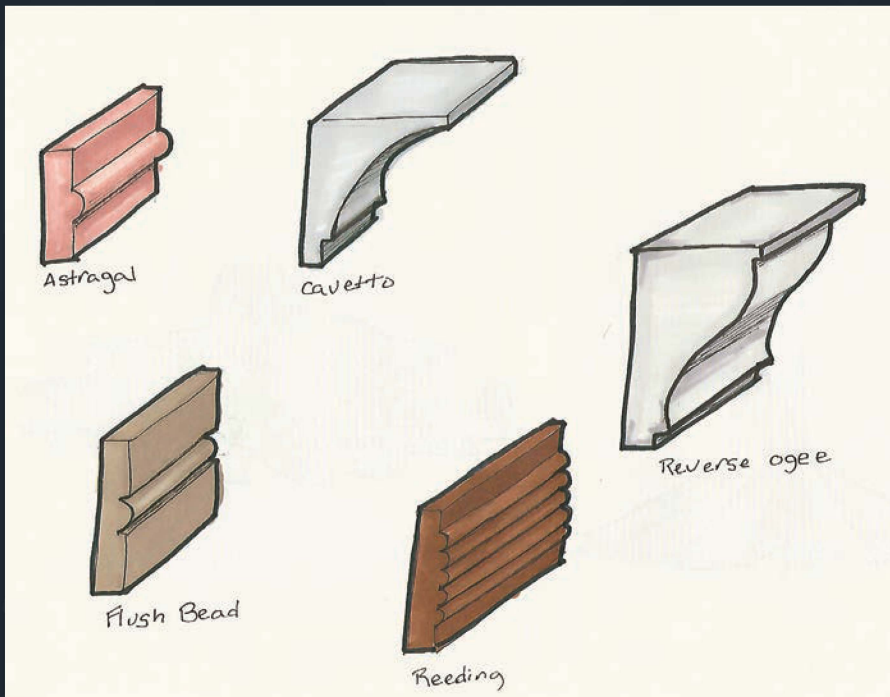
sketchy lines



color removed

SKETCHING

objects



moulding profiles

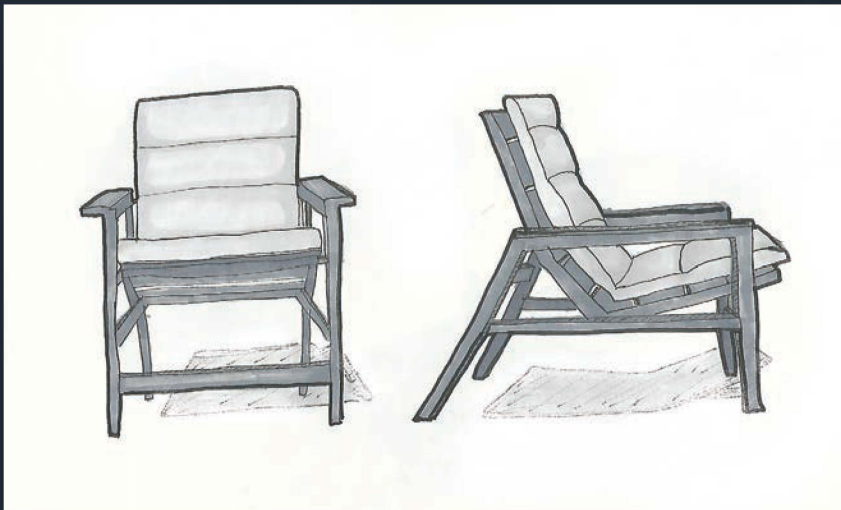


daylilies

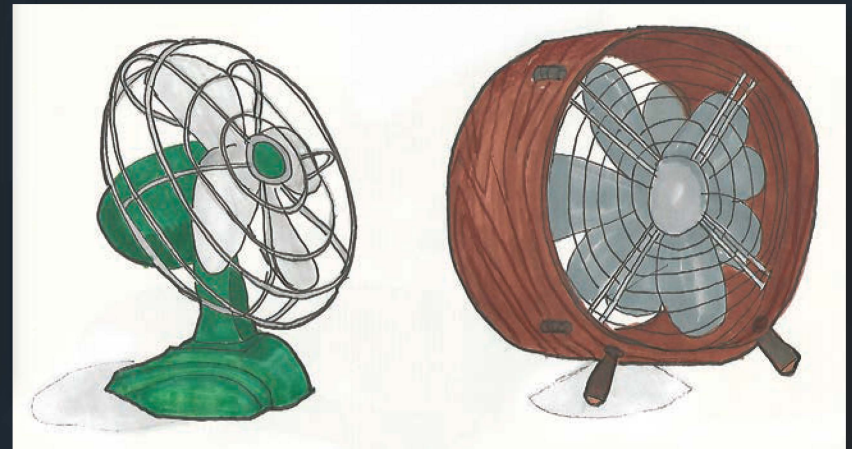


santa ana winds

The ability to sketch is an important and primary skill for all designers.



Impanema chair



fans

TABLE OF CONTENTS

CONCEPT DESIGN
diverstiy - kellogg's 3 - 6 pgs.

MATERIAL CHOICES
kitchen design 7 - 8 pgs.

SMALL DESIGN
furniture 9 - 10 pgs.

SKETCHING
objects 11 - 12 pgs.



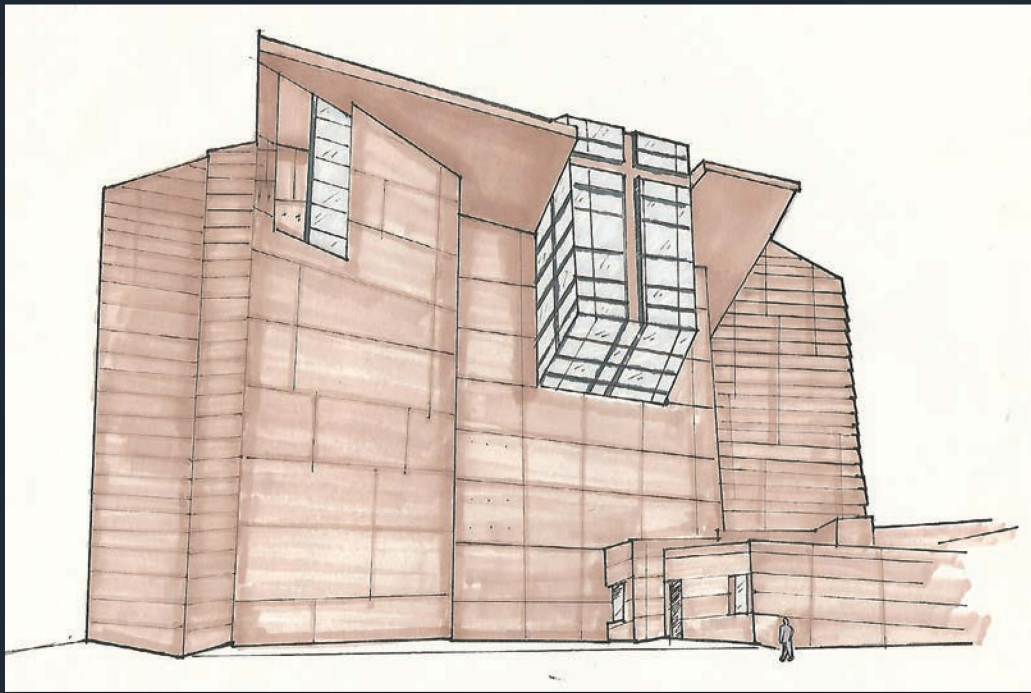
pgs. 15 - 16 SKETCHING
architecture

pgs. 17 - 18 SMALL DESIGN
pop-up

pgs. 19 - 20 MATERIAL CHOICES
community center

pgs. 21 - 24 CONCEPT DESIGN
touchdown - asid

TABLE OF CONTENTS



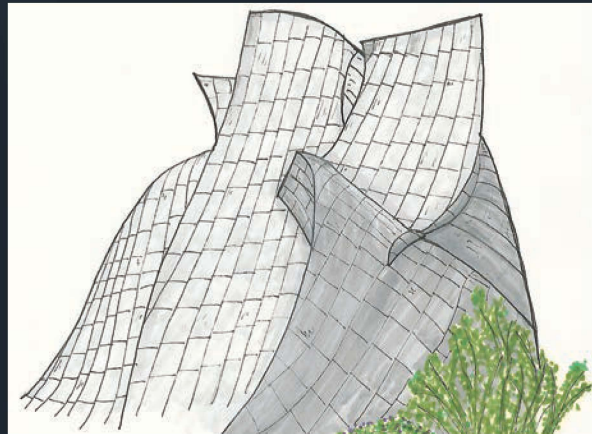
cathedral of our lady, los angeles



cathedral of our lady, cement wall / sconces

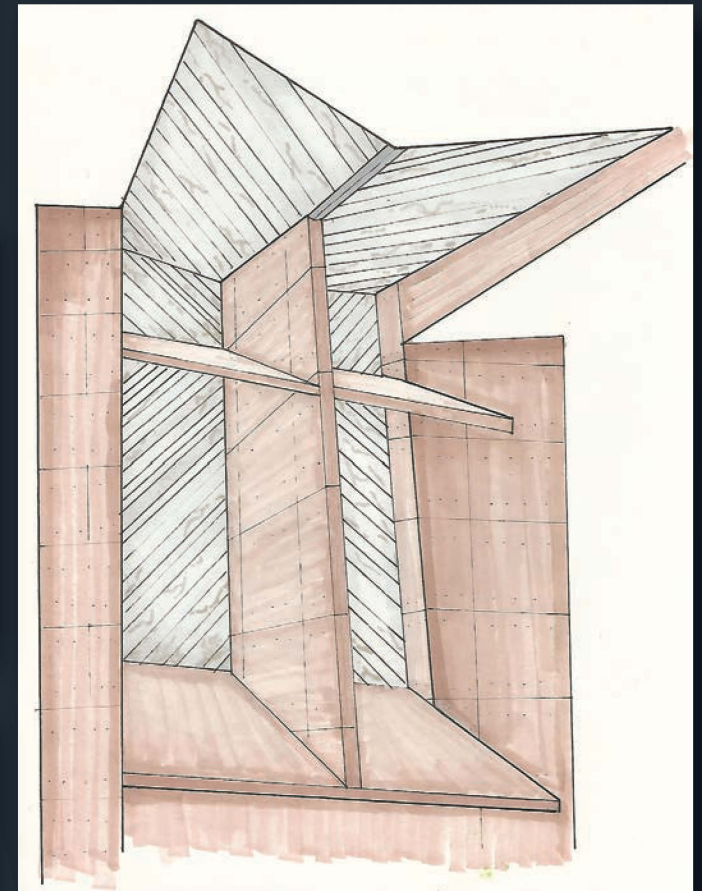


hotel weisgart



disney concert hall, garden view

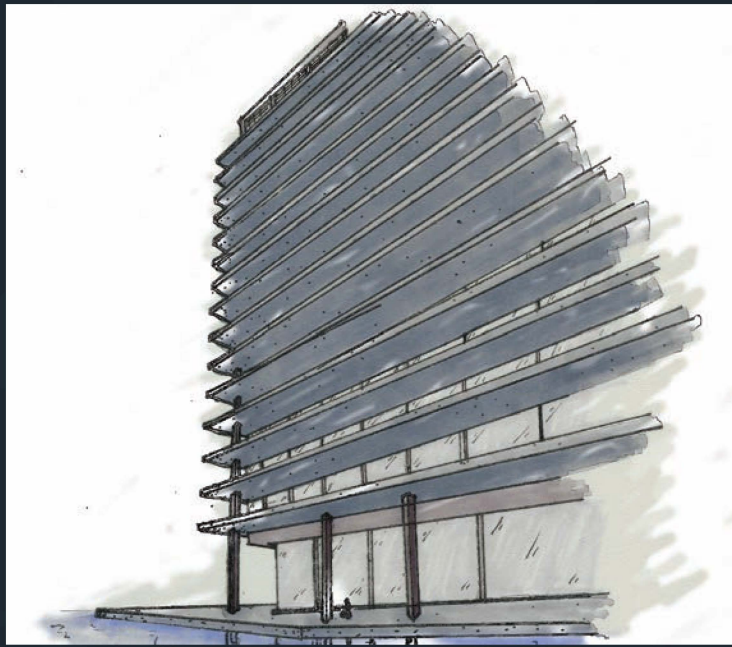
Sketching architecture and elements gives a designer the ability to quickly communicate their ideas.



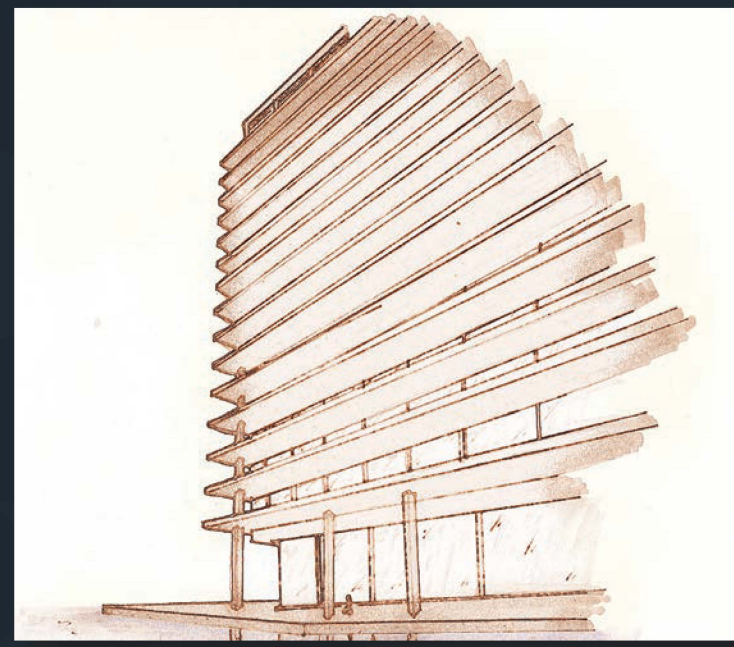
cathedral of our lady, interior cross window

architecture

SKETCHING



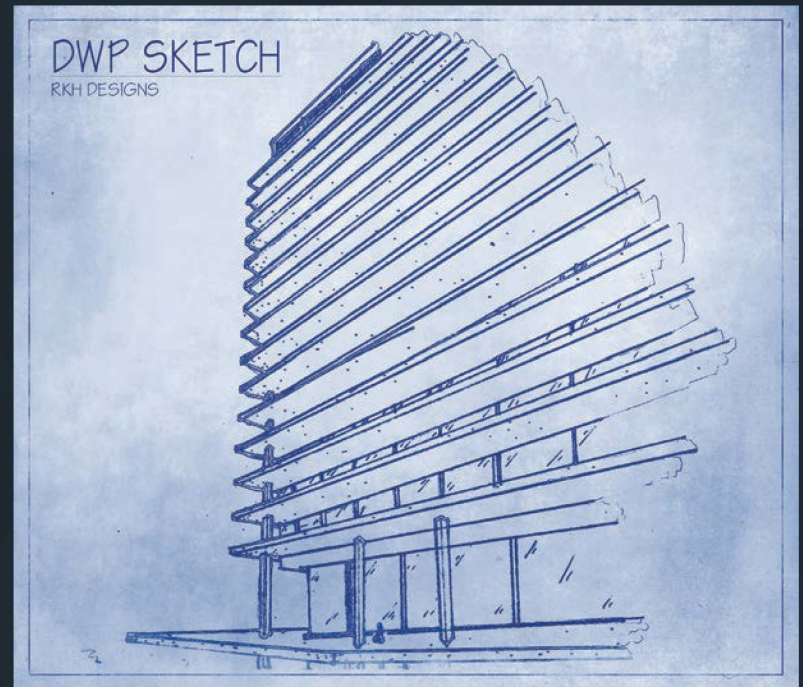
paint effect



color / texture change

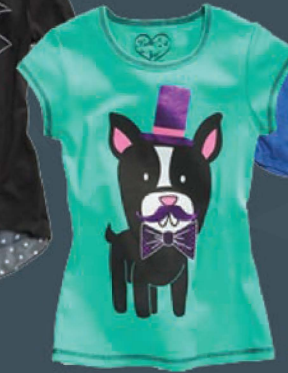


original



blue print

manipulations in photoshop



This pop-up store, that featured a girls clothing line, Belle du Jour, drew it's concept, the untied tie, from the whimsical bow tie detail featured on many of the graphic tees.



A small space can have a lot of impact. The key for a designer is to pay attention to the details.

pop-up

SMALL DESIGNS

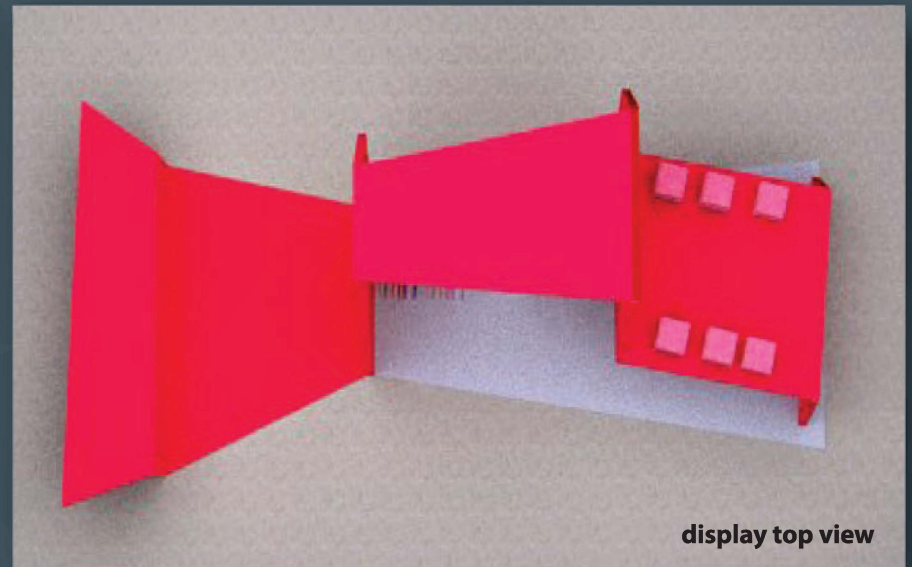
designing a custom product display for the pop-up is a detail that makes the space more interesting.



left side view

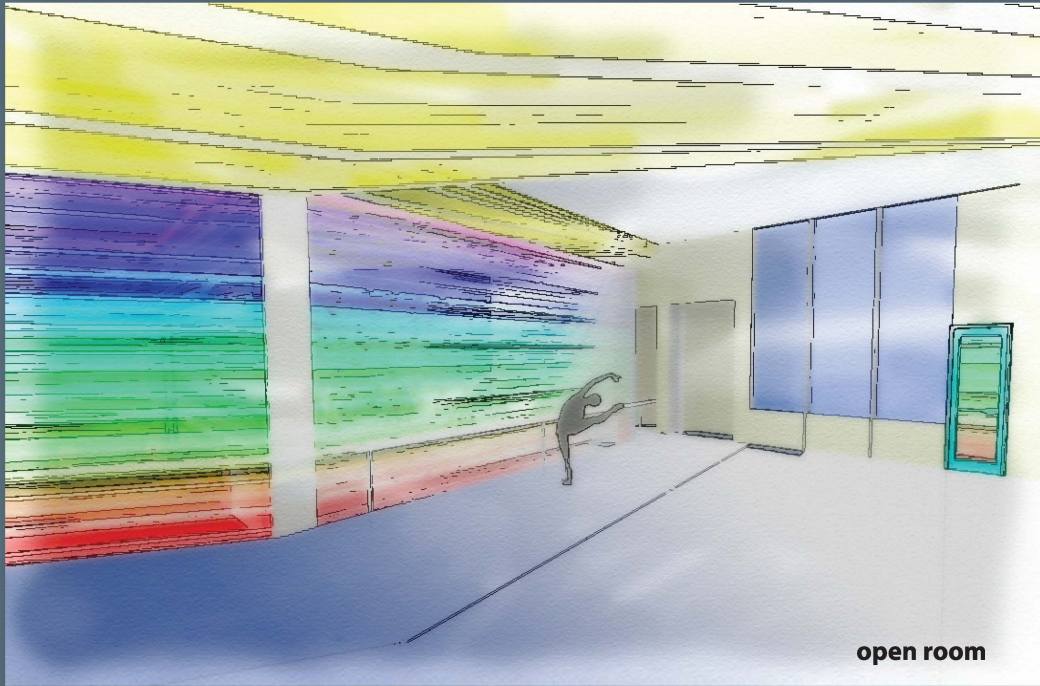


front view

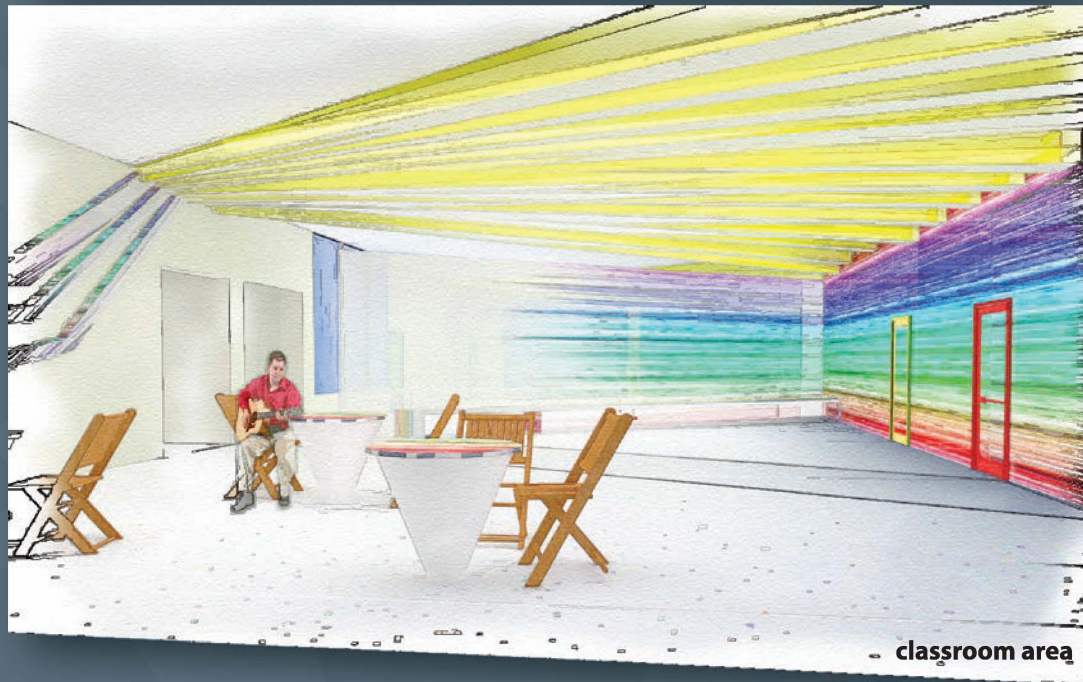


display top view

drawn in google sketchup with vray, manipulated in photoshop



open room



classroom area

learning an artform helps kids and individuals flourish and learn valuable skills.

In Positive Psychology flourishing is a concept which is a measure of overall well-being and is viewed as important to the idea of happiness.

Top 10 skills children learn from the arts:

1. Creativity
2. Confidence
3. Problem Solving
4. Perseverance
5. Focus
6. Non-Verbal communication
7. Receiving constructive feedback
8. Collaboration
9. Dedication
10. Accountability



lobby



lobby

community center

MATERIAL CHOICES

Materials can enhance a design and help set a mood.



colorful translucent plastic creates the ceiling fins and the walls

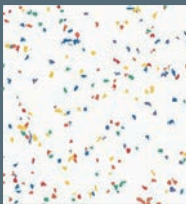


COMMUNITY

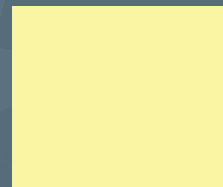
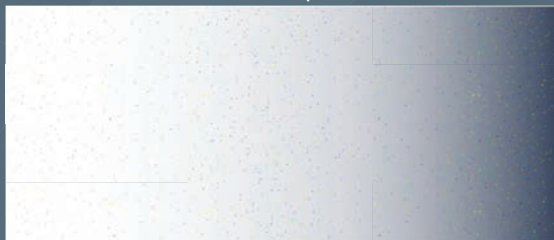
custom wall art



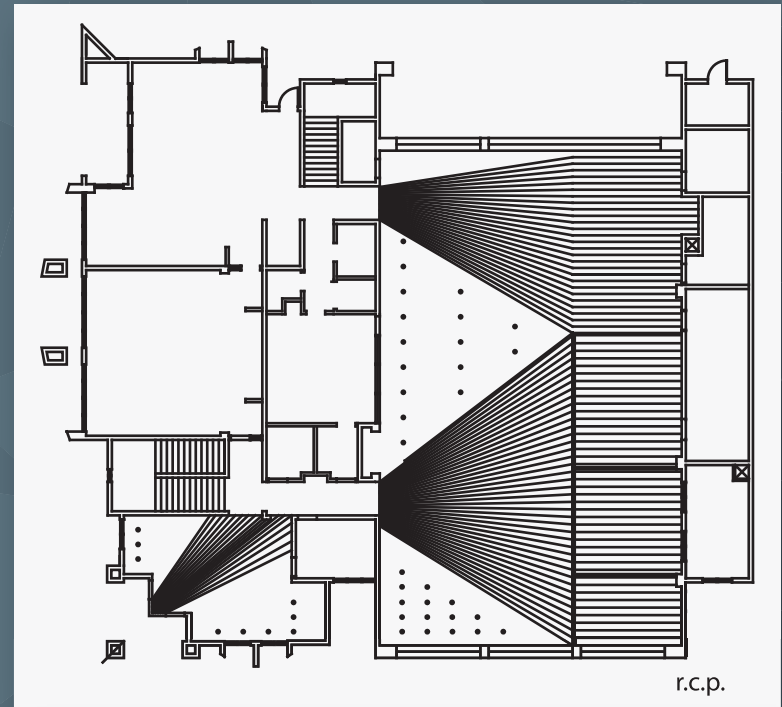
custom art benches and music stands



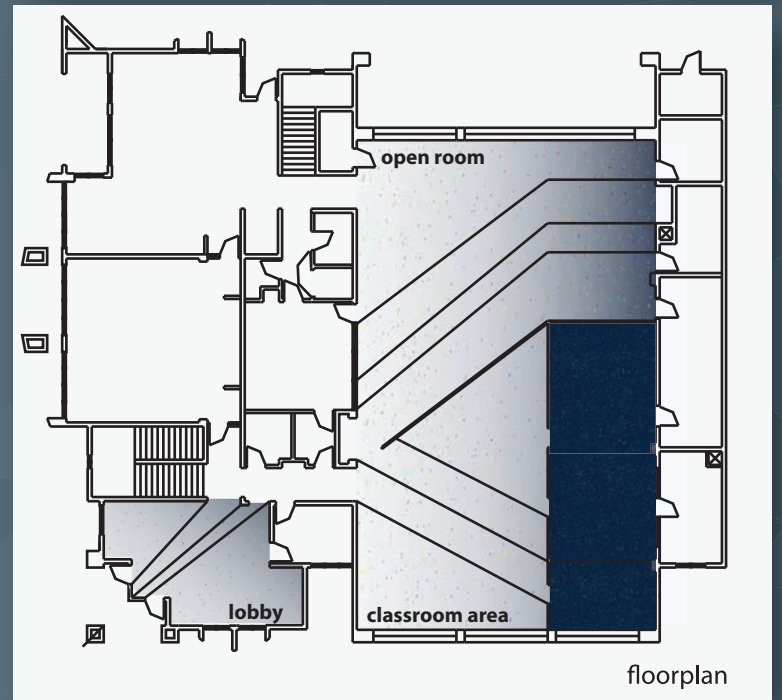
The floor pattern becomes a deeper blue while also becoming more saturated with colored specks.



Paint color: morning light



r.c.p.



floorplan

just as people flourish and grow in this center, so do the materials and colors.

drawn in autocad, manipulated in photoshop

as we ascend through the clouds the sky darkens towards space, so too does the ceiling.

@10'



@11'

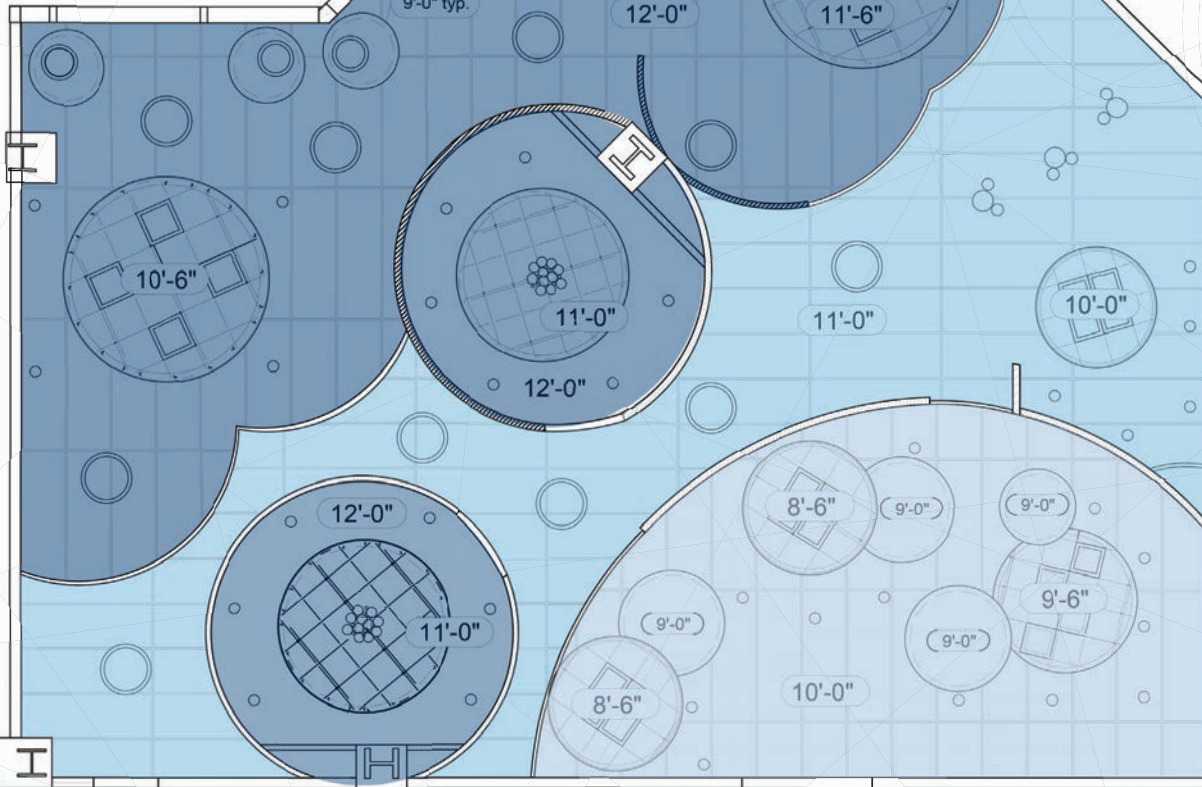


led circular light fixtures

armstrong clouds repeat the cloud "molecule" concept

@12'

r.c.p.



Developing the right concept for a design takes a lot of trial and error. Ultimately the right one will click and be the basis for a fantastic design.

CLOUD

"oh, i have slipped the surly bonds of earth, and danced the skies on laughter-silvered wings; sunward i've climbed and joined the tumbling mirth of sun-split clouds..."

pilot officer john gillespie magee jr., 1941

cumulus

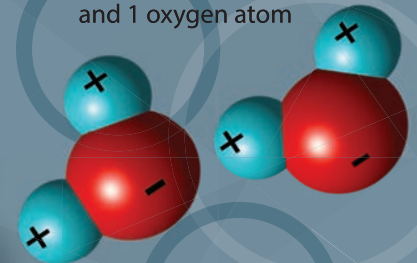


cloud computing



a cloud is a large collection of very tiny water droplets

water droplets are created from molecules molecules are formed from 2 hydrogen atoms and 1 oxygen atom





customer service



lounge



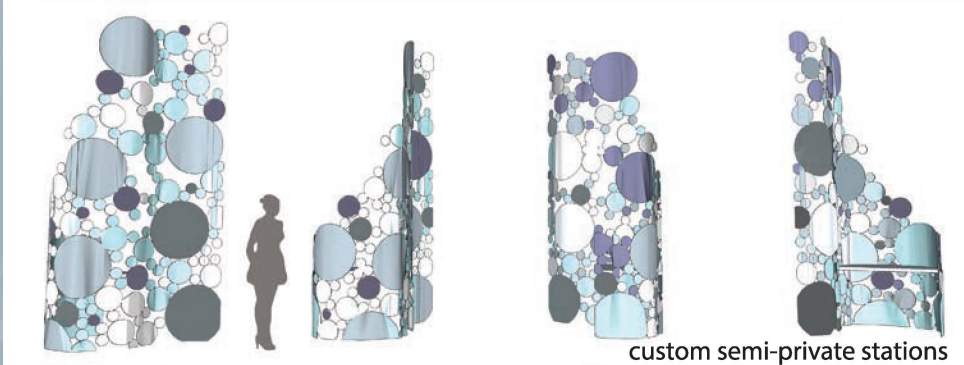
conference room



eat in area



outside front



custom semi-private stations



workstations
conference room



workstations
semi-private stations

drawn in google sketchup with vray, manipulated in photoshop

In the middle it begins

This portfolio is the product of 4 years of interior design study at Mt. Sac College in Walnut, Ca. It represents just a small portion of the projects actually done in the whole 4 years, but it does represent some of the projects that were the most successful. It also represents only a few 100 hours of the 100's and 100's of hours spent studying, and drafting, and rendering, and, crafting, and creating. It has been an edifying journey, and I'm happy to say I know it's not the end. Because as designers there is always so much more to study, and draft, and render, and craft, and create. Thank-you to those who have been my teachers, and thank-you to all the family and friends who have supported and helped me along the way. I'll never forget it. Rebecca Hagen

RKH DESIGN

SAN DIMAS, CA

RKHDESIGN.HUJW@GMAIL.COM

